

Express Service



JSP60617 KIA EXPRESS SERVICE TOOL KIT
60617-CAT

TABLE OF CONTENTS

JSP60617 Cart Inventory List 3

JSP60617 Cart Drawer Layout..... 4

Top Lid/Drawer Details 5

Drawer #1 Details 6

Drawer #2 Details 7

Drawer #3 Details 8

Drawer #4 Details 9

Bottom Tray Details 10

Cart Assembly Instructions 11-12

Express Service Tool Kit Inventory List..... 13-14

Ordering Procedures • Warranty Procedures • Kia Approved Dealer Tool and Equipment Program 15



JSP60617 CART INVENTORY LIST

PART #	DRAWER LOCATION	TOOL DESCRIPTION	TOOL TYPE	QUANTITY
JSP60476		Kia Express Service Cart	Cart	1
MLW2454-22	Top Lid/Drawer	Milwaukee 3/8", Cordless Impact	Cordless	1
JSP60754	Top Lid/Drawer	3/8" Drive Flex Head Ratchet, 17" Long	Wrench	1
JSP95646	Top Lid/Drawer	27mm, 3/8" Drive 6pt Socket	Sockets	1
JSP86976	Top Lid/Drawer	3/8" Phillips Bit Socket #2	Sockets	1
JSP102-4	Top Lid/Drawer	1/2" Drive Impact Wrench with Long Anvil	Air	1
JSP96218	Top Lid/Drawer	30-250 ft/lb Torque Wrench, 1/2" Drive	Wrench	1
JSP50091A	Top Lid/Drawer	80 ft/lb Torque Extension, 1/2" Drive	Extension	1
JSP78486	Top Lid/Drawer	12 pc. 3/8" Metric Impact (Shallow) Socket Set	Sockets	1
JSP78182	Top Lid/Drawer	3/8", 3" Extension	Extension	1
JSP78183	Top Lid/Drawer	3/8", 6" Extension	Extension	1
JSP95444	Top Lid/Drawer	3/8" Drive Standard Ratchet, 7" Long	Wrench	1
JSP95863	Top Lid/Drawer	Black AAA LED Penlight	Light	1
JSP96710	Top Lid/Drawer	Safety Glasses	Safety	1
09263-3C100A	Drawer 1	Oil Filter Wrenches (OE Cap Wrench)	Oil Filter Wrench	1
K95U-1000-G	Drawer 1	Oil Filter Wrenches (OE Cap Wrench)	Oil Filter Wrench	1
092632E000	Drawer 1	Oil Filter Wrenches (OE Cap Wrench)	Oil Filter Wrench	1
JSP06103	Drawer 1	Finger Type Adjustable Oil Filter Wrench	Oil Filter Wrench	1
JSP85695	Drawer 1	17mm Ratcheting Wrench (10" Length)	Wrench	1
JSP98989	Drawer 1	Trim Clip Tools (Pry Fork and Blade)	Trim	1
JSP422112G	Drawer 2	Tire Depth Gauge	Tire	1
JSP98969	Drawer 2	Air Blow Gun	Air	1
JSP97844	Drawer 2	8 pc. Brake Gauge	Tire	1
JSP96971	Drawer 2	7" Diagonal Blue Handle	Pliers	1
JSP96973	Drawer 2	8" Pliers Blue Handle	Pliers	1
JSP96972	Drawer 2	8" Needle Nose Pliers Blue Handle	Pliers	1
JSP95209	Drawer 2	10" Tongue Groove Joint Pliers	Pliers	1
JSP95615	Drawer 3	1/2" Drive Deep Sockets Color Coded with Nylon Sleeve (17mm, 19mm, 21mm, 13/16", 3/4")	Sockets	1
JSP78533	Drawer 3	15 pc. Metric Wrench Set	Wrench	1
JSP41856	Drawer 3	8 pc. Phillips / Slot Screwdriver Set	Screwdriver	1
JSP98974	Drawer 4	32 oz. Large Dead Blow Hammer	Hammer	1
JSP99469	Drawer 4	Digital Inflator Gauge	Air	1
JSP99973	Bottom Tray	2 pc. Fender Cover Set	Cover	1
JSP98972	Bottom Tray	Funnel	Funnel	1

JSP60617 CART DRAWER LAYOUT

TOP LID/DRAWER



DRAWER #1



DRAWER #2



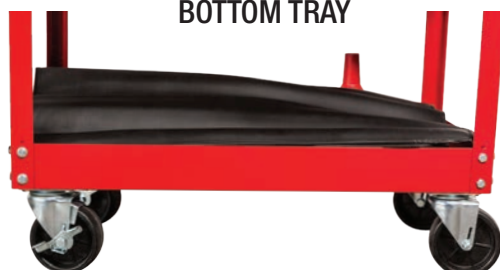
DRAWER #3



DRAWER #4



BOTTOM TRAY





PART #	DRAWER LOCATION	TOOL DESCRIPTION	TOOL TYPE	QUANTITY
MLW2454-22	Top Lid/Drawer	Milwaukee 3/8", Cordless Impact	Cordless	1
JSP60754	Top Lid/Drawer	3/8" Drive Flex Head Ratchet, 17" Long	Wrench	1
JSP95646	Top Lid/Drawer	27mm, 3/8" Drive 6pt Socket	Sockets	1
JSP86976	Top Lid/Drawer	3/8" Phillips Bit Socket #2	Sockets	1
JSP102-4	Top Lid/Drawer	1/2" Drive Impact Wrench with Long Anvil	Air	1
JSP96218	Top Lid/Drawer	30-250 ft/lb Torque Wrench, 1/2" Drive	Wrench	1
JSP50091A	Top Lid/Drawer	80 ft/lb Torque Extension, 1/2" Drive	Extension	1
JSP78486	Top Lid/Drawer	12 pc. 3/8" Metric Impact (Shallow) Socket Set	Sockets	1
JSP78182	Top Lid/Drawer	3/8", 3" Extension	Extension	1
JSP78183	Top Lid/Drawer	3/8", 6" Extension	Extension	1
JSP95444	Top Lid/Drawer	3/8" Drive Standard Ratchet, 7" Long	Wrench	1
JSP95863	Top Lid/Drawer	Black AAA LED Penlight	Light	1
JSP96710	Top Lid/Drawer	Safety Glasses	Safety	1



DRAWER #1



PART #	DRAWER LOCATION	TOOL DESCRIPTION	TOOL TYPE	QUANTITY
09263-3C100A	Drawer 1	Oil Filter Wrenches (OE Cap Wrench)	Oil Filter Wrench	1
K95U-1000-G	Drawer 1	Oil Filter Wrenches (OE Cap Wrench)	Oil Filter Wrench	1
092632E000	Drawer 1	Oil Filter Wrenches (OE Cap Wrench)	Oil Filter Wrench	1
JSP06103	Drawer 1	Finger Type Adjustable Oil Filter Wrench	Oil Filter Wrench	1
JSP85695	Drawer 1	17mm Ratcheting Wrench (10" Length)	Wrench	1
JSP98989	Drawer 1	Trim Clip Tools (Pry Fork and Blade)	Trim	1





PART #	DRAWER LOCATION	TOOL DESCRIPTION	TOOL TYPE	QUANTITY
JSP422112G	Drawer 2	Tire Depth Gauge	Tire	1
JSP98969	Drawer 2	Air Blow Gun	Air	1
JSP97844	Drawer 2	8 pc. Brake Gauge	Tire	1
JSP96971	Drawer 2	7" Diagonal Blue Handle	Pliers	1
JSP96973	Drawer 2	8" Pliers Blue Handle	Pliers	1
JSP96972	Drawer 2	8" Needle Nose Pliers Blue Handle	Pliers	1
JSP95209	Drawer 2	10" Tongue Groove Joint Pliers	Pliers	1

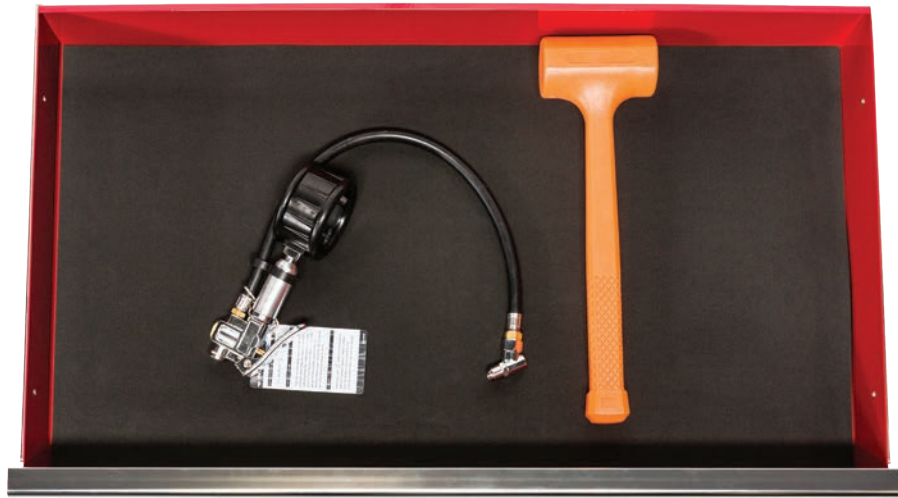


DRAWER #3



PART #	DRAWER LOCATION	TOOL DESCRIPTION	TOOL TYPE	QUANTITY
JSP95615	Drawer 3	1/2" Drive Deep Sockets Color Coded with Nylon Sleeve (17mm, 19mm, 21mm, 13/16", 3/4")	Sockets	1
JSP78533	Drawer 3	15 pc. Metric Wrench Set	Wrench	1
JSP41856	Drawer 3	8 pc. Phillips / Slot Screwdriver Set	Screwdriver	1

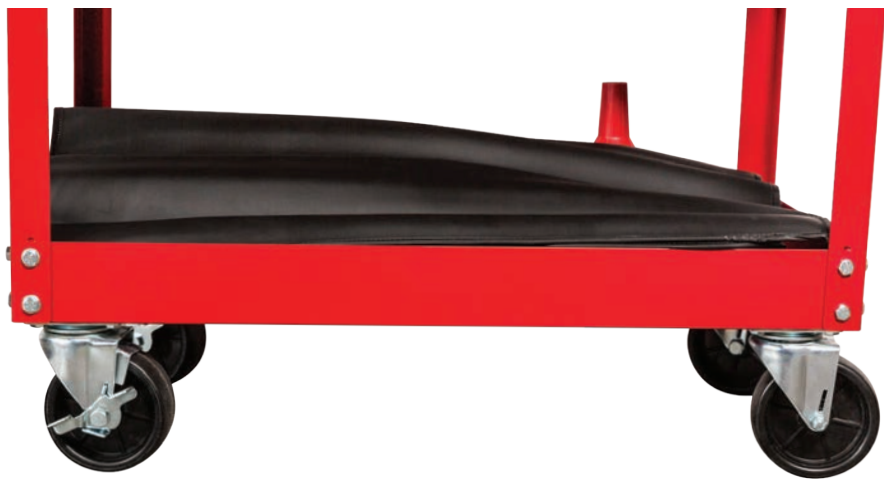




PART #	DRAWER LOCATION	TOOL DESCRIPTION	TOOL TYPE	QUANTITY
JSP98974	Drawer 4	32 oz. Large Dead Blow Hammer	Hammer	1
JSP99469	Drawer 4	Digital Inflator Gauge	Air	1



BOTTOM TRAY



PART #	DRAWER LOCATION	TOOL DESCRIPTION	TOOL TYPE	QUANTITY
JSP99973	Bottom Tray	2 pc. Fender Cover Set	Cover	1
JSP98972	Bottom Tray	Funnel	Funnel	1



FEATURES

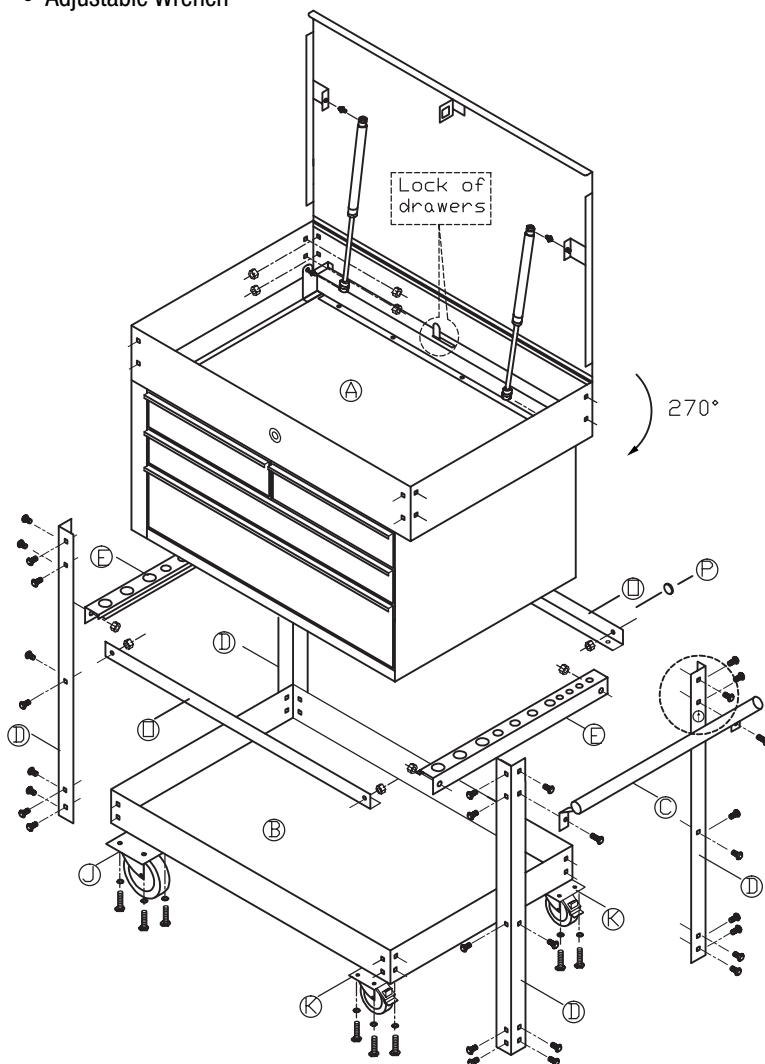
- Heavy duty all steel construction
- Quality ball bearing slides for smooth and easy opening/closing
- Gas struts to keep lid open
- Professional barrel key lock
- Oil resistant heavy-duty 5" casters, 2 locking/2 non-locking
- Convenient handle can be installed on either end for easy maneuvering

SPECIFICATIONS

- Weight Capacity: 500 lbs
- Overall Dimensions: 30-7/8" Wide x 20-1/2" Deep x 28-3/4" High
- Top Drawers: (2) 12-1/4" Wide x 17-1/2" Deep x 3-1/4" High
- Third Drawer: 25-5/8" Wide x 17-1/2" Deep x 3-1/4" High
- Fourth Drawer: 25-5/8" Wide x 17-1/2" Deep x 6-5/8" High
- Bottom Tray: 29-3/4" Wide x 19-1/8" Deep x 3" High

TOOLS NEEDED

- Flat Work Surface
- 2 people
- 5/16" Wrench
- Ratchet with 5/16" Socket
- Adjustable Wrench



PARTS LIST		PART NAME	QTY.
A.		Upper Panel Set	1
B.		Bottom Pan	1
C.		Side Handle	1
D.		Footed Frame	4
E.		R and L Frame Crossmember	2
F.		Carriage Screw (Body) 5/16" x 1/2"	38
G.		Carriage Screw (Side Handle) 5/16" x 5/8"	2
H.		Nylon Nut (Caster and Body) 5/16"	56
I.		Hex Bolt (Caster) 5/16" x 5/8"	16
J.		Caster 5" x 2"	2
K.		Caster w/ Brake 5" x 2"	2
L.		Washer (Caster and Body)	16
M.		Gas Lift	2
N.		Ball Stud	4
O.		F and B Frame Crossmember	2
P.		Cushion (Round Shape)	3
Q.		EVA Drawer Mat	4

CART ASSEMBLY INSTRUCTIONS

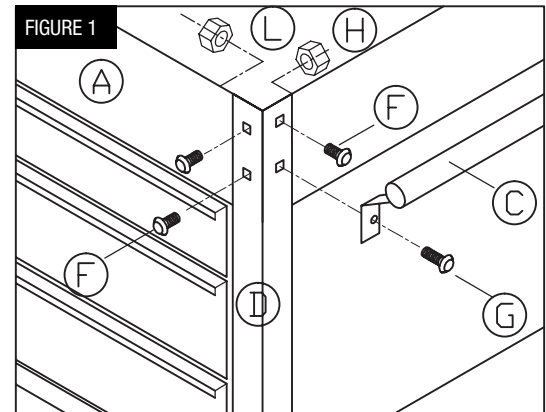
STEP 1: ASSEMBLY PREPARATION

- Carefully unpack and spread out all parts in a large, uncluttered area. Reference the parts list to make sure you have all pieces necessary for assembly. Read all assembly instructions thoroughly before beginning.

STEP 2: INSTALLING SIDE FRAMES

- Using two people, lay upper panel set (A) on a flat surface on one side. Attach one footed frame rail (D) to corner of upper panel set using carriage screw (F) and nylon nut (H) as shown in Figure 1. Do not tighten hardware until all frame rails are aligned and assembly is square. Attach footed frame rail (D) to bottom pan (B). Repeat procedure for all four corners. Once all frame rails are aligned and assembly is square, hand tighten all hardware.

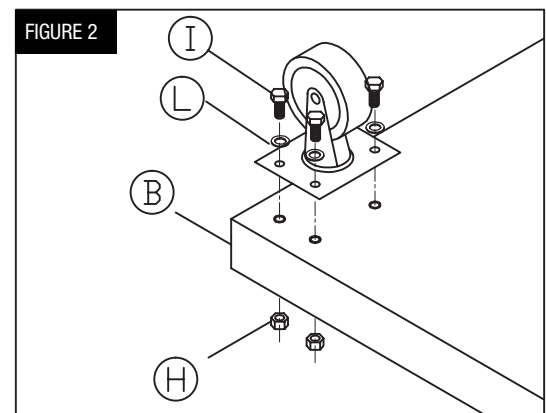
NOTE: On the preferred side of handle; do not install bolts in the holes second from top on the side of the upper panel set (A) during this step.



STEP 3: INSTALLING CASTERS

- Lay cardboard on a flat surface to avoid scratching painted lid. Ensure drawers are closed and lid is locked. Using two people, turn upper panel assembly upside down on flat surface. Align holes in locking and non-locking casters (J & K) with matching holes in bottom pan (B) as shown in figure 2. Place washer (L) over hex bolt (I) and insert through caster bolt hole, hand tighten nylon nut (H) onto hex bolt. Repeat for all casters.

NOTE: Ensure that both locking casters are on the same end of the cart. Suggested side would be same side as the handle.



STEP 4: INSTALLING FRAME CROSSMEMBERS

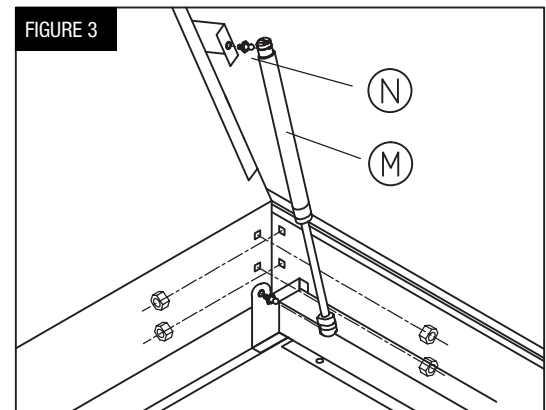
- Using two people, turn assembly up onto casters and lock locking casters to avoid moving cart during assembly. Align holes in R and L frame crossmember (E) with middle hole in footed frame rail (D) on side of assembly. Insert carriage screw (F) through bolt hole, hand tighten nylon nut (H) onto screw. Repeat for opposite side. Align holes in F and B frame crossmember (O) with middle hole in footed frame rail (D) on front of assembly. Insert carriage screw (F) through bolt hole, hand tighten nylon nut (H) onto screw. Repeat for opposite side.

STEP 5: INSTALLING HANDLE

- Align handle holes on preferred side of cart with handle brackets facing downward. Insert carriage screw (G) through bolt hole, hand tighten nylon nut (H) onto screw.

STEP 6: INSTALLING GAS LIFT AND DRAWER MATS

- Using one person, lift lid and hold open. Insert ball stud (N) into threaded holes in lid and top tray as shown in figure 3 and hand tighten. Align holes in gas lift with ball stud and press gas lift onto ball. Repeat for top and bottom, both sides. Open pull out drawers and insert drawer mat (Q).



 **ALWAYS USE EYE PROTECTION WHILE USING HAND TOOLS**

 **WARNING:** Verify that your work surface can support 150 lbs (68 kg). Failure to follow this warning could result in damage to property or personal injury.

 **NOTE:** Cover working area to prevent any damage to surface.

EXPRESS SERVICE TOOL KIT INVENTORY LIST

PART #	DRAWER LOCATION	TOOL DESCRIPTION	TOOL TYPE	QUANTITY
MLW2454-22	Top Lid/Drawer	Milwaukee 3/8", Cordless Impact	Cordless	1
JSP60754	Top Lid/Drawer	3/8" Drive Flex Head Ratchet, 17" Long	Wrench	1
JSP95646	Top Lid/Drawer	27mm, 3/8" Drive 6pt Socket	Sockets	1
JSP86976	Top Lid/Drawer	3/8" Phillips Bit Socket #2	Sockets	1
JSP102-4	Top Lid/Drawer	1/2" Drive Impact Wrench with Long Anvil	Air	1
JSP96218	Top Lid/Drawer	30-250 ft/lb Torque Wrench, 1/2" Drive	Wrench	1
JSP50091A	Top Lid/Drawer	80 ft/lb Torque Extension, 1/2" Drive	Extension	1
JSP78486	Set Contents	12 pc. 3/8" Metric Impact (Shallow) Socket Set	Sockets	1
JSP78487	Set Contents	8mm- 3/8" Drive Shallow Impact Socket	Sockets	1
JSP78488	Set Contents	9mm- 3/8" Drive Shallow Impact Socket	Sockets	1
JSP78489	Set Contents	10mm- 3/8" Drive Shallow Impact Socket	Sockets	1
JSP78490	Set Contents	11mm- 3/8" Drive Shallow Impact Socket	Sockets	1
JSP78491	Set Contents	12mm- 3/8" Drive Shallow Impact Socket	Sockets	1
JSP78492	Set Contents	13mm- 3/8" Drive Shallow Impact Socket	Sockets	1
JSP78493	Set Contents	14mm- 3/8" Drive Shallow Impact Socket	Sockets	1
JSP78494	Set Contents	15mm- 3/8" Drive Shallow Impact Socket	Sockets	1
JSP78495	Set Contents	16mm - 3/8" Drive Shallow Impact Socket	Sockets	1
JSP78496	Set Contents	17mm - 3/8" Drive Shallow Impact Socket	Sockets	1
JSP78182	Top Lid/Drawer	3/8", 3" Extension	Extension	1
JSP78183	Top Lid/Drawer	3/8", 6" Extension	Extension	1
JSP95444	Top Lid/Drawer	3/8" Drive Standard Ratchet, 7" Long	Wrench	1
JSP95863	Top Lid/Drawer	Black AAA LED Penlight	Light	1
JSP96710	Top Lid/Drawer	Safety Glasses	Safety	1

PART #	DRAWER LOCATION	TOOL DESCRIPTION	TOOL TYPE	QUANTITY
09263-3C100A	Drawer 1	Oil Filter Wrenches (OE Cap Wrench)	Oil Filter Wrench	1
K95U-1000-G	Drawer 1	Oil Filter Wrenches (OE Cap Wrench)	Oil Filter Wrench	1
092632E000	Drawer 1	Oil Filter Wrenches (OE Cap Wrench)	Oil Filter Wrench	1
JSP06103	Drawer 1	Finger Type Adjustable Oil Filter Wrench	Oil Filter Wrench	1
JSP85695	Drawer 1	17mm Ratcheting Wrench (10" Length)	Wrench	1
JSP98989	Drawer 1	Trim Clip Tools (Pry Fork and Blade)	Trim	1

PART #	DRAWER LOCATION	TOOL DESCRIPTION	TOOL TYPE	QUANTITY
JSP422112G	Drawer 2	Tire Depth Gauge	Tire	1
JSP98969	Drawer 2	Air Blow Gun	Air	1
JSP97844	Drawer 2	8 pc. Brake Gauge	Tire	1
JSP96971	Drawer 2	7" Diagonal Blue Handle	Pliers	1
JSP96973	Drawer 2	8" Pliers Blue Handle	Pliers	1
JSP96972	Drawer 2	8" Needle Nose Pliers Blue Handle	Pliers	1
JSP95209	Drawer 2	10" Tongue Groove Joint Pliers	Pliers	1

EXPRESS SERVICE TOOL KIT INVENTORY LIST

PART #	DRAWER LOCATION	TOOL DESCRIPTION	TOOL TYPE	QUANTITY
JSP95615	Drawer 3	1/2" Drive Deep Sockets Color Coded with Nylon Sleeve (17mm, 19mm, 21mm, 13/16", 3/4")	Sockets	1
JSP95615-01	Set Contents	17mm Blue - 1/2" Drive Deep Socket with Nylon Sleeve	Sockets	1
JSP95615-02	Set Contents	19mm Gold - 1/2" Drive Deep Socket with Nylon Sleeve	Sockets	1
JSP95615-03	Set Contents	13/16" Purple - 1/2" Drive Deep Socket with Nylon Sleeve	Sockets	1
JSP95615-04	Set Contents	21mm Red - 1/2" Drive Deep Socket with Nylon Sleeve	Sockets	1
JSP95615-05	Set Contents	3/4" Green - 1/2" Drive Deep Socket with Nylon Sleeve	Sockets	1
JSP78533	Drawer 3	15 pc. Metric Wrench Set	Wrench	1
JSP78332	Set Contents	7mm Wrench	Wrench	1
JSP78333	Set Contents	8mm Wrench	Wrench	1
JSP78334	Set Contents	9mm Wrench	Wrench	1
JSP78335	Set Contents	10mm Wrench	Wrench	1
JSP78336	Set Contents	11mm Wrench	Wrench	1
JSP78337	Set Contents	12mm Wrench	Wrench	1
JSP78338	Set Contents	13mm Wrench	Wrench	1
JSP78339	Set Contents	14mm Wrench	Wrench	1
JSP78340	Set Contents	15mm Wrench	Wrench	1
JSP78341	Set Contents	16mm Wrench	Wrench	1
JSP78342	Set Contents	17mm Wrench	Wrench	1
JSP78343	Set Contents	18mm Wrench	Wrench	1
JSP78344	Set Contents	19mm Wrench	Wrench	1
JSP78345	Set Contents	20mm Wrench	Wrench	1
JSP78346	Set Contents	21mm Wrench	Wrench	1
JSP41856	Drawer 3	8 pc. Phillips / Slot Screwdriver Set	Screwdriver	1
JSP41857	Set Contents	Phillips PH0 x 3" Screwdriver	Screwdriver	1
JSP41858	Set Contents	Phillips PH1 x 3" Screwdriver	Screwdriver	1
JSP41859	Set Contents	Phillips PH2 x 4" Screwdriver	Screwdriver	1
JSP41860	Set Contents	Phillips PH3 x 6" Screwdriver	Screwdriver	1
JSP41861	Set Contents	Flat 1/8" x 3" Screwdriver	Screwdriver	1
JSP41862	Set Contents	Flat 3/16" x 4" Screwdriver	Screwdriver	1
JSP41863	Set Contents	Flat 1/4" x 4" Screwdriver	Screwdriver	1
JSP41864	Set Contents	Flat 5/16" x 6" Screwdriver	Screwdriver	1

PART #	DRAWER LOCATION	TOOL DESCRIPTION	TOOL TYPE	QUANTITY
JSP98974	Drawer 4	32 oz. Large Dead Blow Hammer	Hammer	1
JSP99469	Drawer 4	Digital Inflator Gauge	Air	1

PART #	DRAWER LOCATION	TOOL DESCRIPTION	TOOL TYPE	QUANTITY
JSP99973	Bottom Tray	2 pc. Fender Cover Set	Cover	1
JSP98972	Bottom Tray	Funnel	Funnel	1

ORDERING PROCEDURE

To reorder a tool, please call the Kia Approved Dealer Tool and Equipment Program at 888-542-1011. Please have the tool part number and quantity available that you wish to order, along with your store number, address, phone number, contact name and company email address.

WARRANTY PROCEDURE 800.255.7011

To warranty an allegedly defective tool please call JS Products Customer Service at (800) 255-7011 or email cservice@jsproducts.com, to request an RGA number.

Please have the tool part number and quantity available along with your store number, address, phone number, contact name and company email address. JS Products Customer Service will provide an RGA number at that time.

The new tool will be shipped out within three days (or sooner if crucial tool) tracking by RGA number. The new tool will contain a “call tag,” please place the allegedly defective tool into the box and place the call tag on the box for return shipment to JS Products.

Once the allegedly defective tool is inspected by the JS Products Quality Control Department and deemed defective, the RGA will be cleared. If the tool is not deemed defective, but rather broken due to misuse or negligence, the store will be notified and charged for the tool.

JS Products, Attn: Warranty / Repair Department, 6445 Montessouri Street, Las Vegas, NV 89113, (800) 255-7011.

NOTES

This image shows a blank sheet of white paper with horizontal ruling lines. The lines are evenly spaced and run across the width of the page. There are no margins, text, or other markings on the paper.

Express Service

CUSTOMER SERVICE: 1.888.542.1011 • FAX: 1.800.892.9651 • KIASPECIALTOOLS.COM

**UPDATED MAY 2021
60617-CAT**