



## GM TPMS AND RF TOOL PN: EL-52545

### Software installation guide (WebVT)



## CONTACT US

Phone: 1-800-GM-TOOLS  
Fax: 800-283-8665

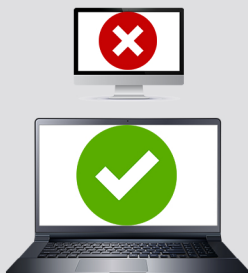
Bosch Automotive Service Solutions Inc.  
28635 Mound Road, Warren, MI 48092

Comprehensive support also available  
through **ateq-tpms.com**



Scan QR code to  
view step-by-step  
video instructions.

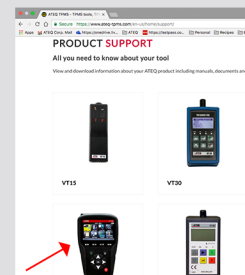
1



Windows PC operation system required for WebVT installation. Charge the tool before use. Use the charger that comes with the tool kit.

**Note:** It is recommended to turn off firewall settings before PC software installation.

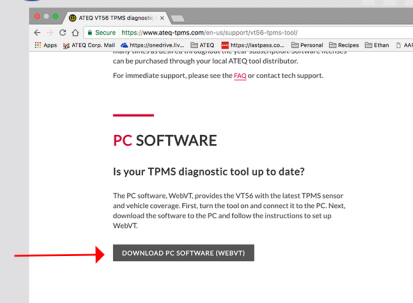
2



Download WebVT onto dealer PC using the CD that came with your tool. **OR**, if your CD is missing, go to [www.ateq-tpms.com](http://www.ateq-tpms.com). Click **PRODUCT SUPPORT**, then select your device.

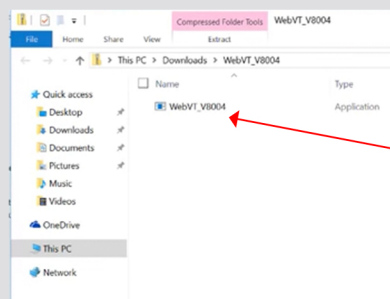
**Note:** If WebVT is already installed to your PC, skip to Step 6.

3



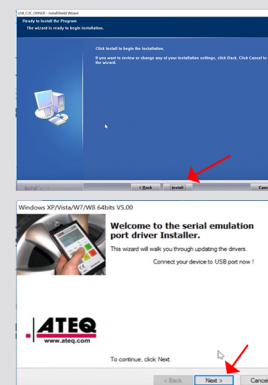
If using the [www.ateq-tpms.com](http://www.ateq-tpms.com) website, click the button **DOWNLOAD THE PC SOFTWARE (WEBVT)**.

4



After the WebVT file is finished downloading, locate and open it to run the WebVT.exe file.

5



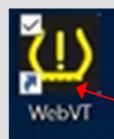
Follow the prompts to continue the installation process. Click **OK** to accept the installation of USB drivers.

6



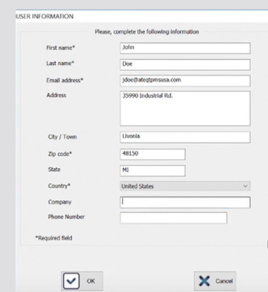
Connect your device to the PC using the USB cable included in the kit. This will allow a two-way connection between your device and PC.

7



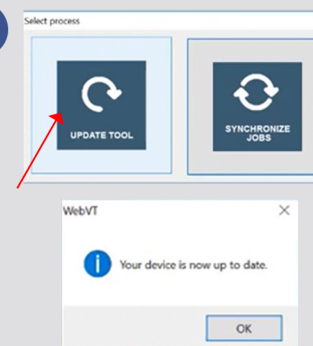
After WebVT has installed, locate and double click the WebVT icon on your desktop.

8



If this is the first time you are updating your device, you will be prompted to fill out the form to register your tool.

9



Click **UPDATE TOOL** to update your device. Your device will complete the update process momentarily.