

# Section 12

## Facility Support Equipment & Supplies

- **Vehicle Exhaust Extraction Systems & Accessories**
- **Two-Way Radios & Accessories**
- **Service Carts**
- **Floor Scrubbers/Sweepers/Vacuums**
- **Air Circulators/Fans/Portable Heaters**
- **Recycling & Environmental Receptacles**



**APPROVED** DEALER  
EQUIPMENT

### Section 12:

*This section features a selection of Facility Support Equipment & Supplies available through the Lexus Approved Dealer Equipment program. All product has been reviewed and approved by Toyota Motor Sales, USA.*

### Suppliers:

- Borroughs Corporation
- Busch Systems International Inc.
- Crushproof Tubing Co.
- Equipto
- Harvey Industries, Inc.
- John Dow Industries
- Lyon Workspace Products
- Marley Engineering Products
- Merchant & Merchant/Kenwood
- Minuteman International, Inc.
- NSS Enterprises, Inc.
- Pro Marketing/Motorola
- Shure Manufacturing Corporation

*For additional product information or to contact a program representative*

**CALL: 1-800-368-6787**

12



## Facility Support Equipment & Supplies:

This is an introduction to Facility Support Equipment & Supplies. Within this section you will find Vehicle Exhaust Extraction Systems & Accessories, Two-Way Radios & Accessories, Service Carts, Floor Scrubbers/Vacuums, and Recycling & Environmental Awareness Products. Some things to consider when shopping for Facility Support Equipment for your service facility, would be:

- Vehicle exhaust extraction systems are very important to your technicians' health and well being if your Service Department ever has running vehicles within the service department with the shop doors closed. Inground and overhead exhaust systems (sliding rail, reels, or telescoping drops) are relatively close price-wise for "green-field" projects. All do a good job extracting exhaust fumes. Be sure to get the "Y" harness adapters for vehicles with dual exhaust.
- If you elect to add a floor scrubber to your list of equipment, be sure to budget for replacement blades, skirts, and filters.
- This section includes a selection of recycled-content waste & recycling containers from deskside waste baskets to 55 gallon round containers to high capacity carts. Waste & recycling receptacles ideal for the shop, the lunchroom, the lobby, and the parking lot help dealers improve their eco-friendly position with customers and the community.

*When considering a purchase of any capitol equipment, please contact your regional manager at 1-800-368-6787 for assistance in configuring the proper set-up for your environment.*

## VEHICLE EXHAUST EXTRACTION SYSTEMS & ACCESSORIES

SUPPLIED BY: CRUSHPROOF TUBING CO.

### Exhaust Systems

Crushproof exhaust tubing has been designed to withstand intermittent exhaust temperatures up to 600°F, while maintaining maximum flexibility and durability.

#### Features

- Multiple pieces of Flarelock style hose can be connected together without any additional parts.
- The exhaust hoses are spirally convoluted and non-reinforced.
- The spiral convolutions permits the use of threaded adapters and accessories that can be tightly screwed into or onto the tubing.

#### Models

- CPT11-3/F350 - 3" Exhaust system with straight adapter.  
Includes: (1) 11' x 3" flarelock Crushproof hose, (1) straight adapter with hook and chain (CPT17AF350).
- CPT11-3/F475 - 3" Exhaust system with oval adapter.  
Includes: (1) 11' x 3" flarelock Crushproof hose, (1) 3" x 6" oval adapter (CPT17AF475).
- CPT11-3/F575 - 3" Exhaust system with oval adapter.  
Includes: (1) 11' x 3" flarelock Crushproof hose, (1) 3.5" x 8.5" oval adapter (CPT17AF575).



CPT11-3/F350

### Flarelock Exhaust Hose

Made exclusively for cars and small trucks. Crushproof's most popular hose line.

#### Feature

- This product should always be used with the appropriate adapter.
- All hoses are 11' long.
- The flared end allows multiple lengths to be connected without additional parts.

#### Models

- CPT11AFLT300 - 11' x 3" flarelock hose. Passenger car.
- CPT11AFLT400 - 11' x 4" flarelock hose. Small truck.



Flarelock Hose

## VEHICLE EXHAUST EXTRACTION SYSTEMS & ACCESSORIES

SUPPLIED BY: CRUSHPROOF TUBING CO.

### Tailpipe Adapters

Designed for easy adapting to all sorts of vehicle tailpipes. No system is complete without a tailpipe adapter.

#### Features

- Designed to withstand up to 600°F tailpipe exhaust temperatures, while maintaining maximum durability.
- Protects the hose and tailpipe.
- Hook and chain holds them in place.
- Always select an adapter with at least 1/2" diameter clearance around the tailpipe.



Tailpipe Adapters

#### Models

- CPT17AF300 - Straight tailpipe adapter. For use with 2-1/2", 3", or 3-1/2" inner diameter hoses. Fits up to 2-1/2" tailpipes.
- CPT17AF350 - Straight tailpipe adapter. For use with 3", 3-1/2" or 4" inner diameter hoses. Fits up to 3" tailpipes.
- CPT17AF350DY - Straight tailpipe adapter. For use with 4" inner diameter Dynamometer hoses. Fits up to 3" tailpipes. Probe hole for easy dyno testing.
- CPT17AF400 - Straight tailpipe adapter. For use with 3-1/2" or 4" inner diameter hoses. Fits up to 3-1/2" tailpipes.
- CPT17AF475 - Oval tailpipe adapter (3" x 6") for twin tailpipes. For use with 3" or 4" inner diameter hoses. Fits oval 2-1/2" x 5-1/2" tailpipes.
- CPT17AF475DY - Oval tailpipe adapter (3" x 6") for twin tailpipes. For use with 4" inner diameter Dynamometer hoses. Fits oval 2-1/2" x 5-1/2" tailpipes. Probe hole for easy dyno testing.
- CPT17AF575 - Oval tailpipe adapter (3-1/2" x 8-1/2") for twin tailpipes. For use with 3" or 4" inner diameter hoses. Fits oval 3" x 8" tailpipes.
- CPT17ARA250 - Bell tailpipe adapter with snaps. For use with 2" inner diameter hoses. Fits all tailpipes.
- CPTDSR600 - Stack Adapter. For use with 4" and 5" inner diameter hoses. Fits up to 5.5" stacks.

### Reel Hose Kits

Designed for use on hose reels and overhead exhaust systems. This lightweight reel hose incorporates 5' of our crushable rubber tubing to prolong hose life. Comes in 25' lengths and includes tailpipe adapter.

#### Features

- Most damage to reel hose systems occurs in the first five feet, but the Crushproof hose prevents that by adding 5' of Crushproof rubber hose to a durable 20' long section of light weight fabric hose.

#### Models

- CPTCPRH400 - 25' x 4" inner diameter hose with adapter.
- CPTCPRH500 - 25' x 5" inner diameter hose with adapter.
- CPTCPRH600 - 25' x 6" inner diameter hose with adapter.



CPTCPRH400

### CPT11AYA300 - Y-Assembly

Designed for converting a single hose into two hoses for dual exhaust vehicles. Includes: (2) 4' x 3" flarelock Crushproof hose, (2) (CPT17AF300) straight adapters w/hook & chain, (1) 3" rubber Y-connector.



### Y Connectors

Allows for three hoses to be joined together for dual exhaust vehicles. Hose threads into the connectors.

#### Models

- CPT16LRY30 - 3" rubber Y connector.
- CPT19MAY40 - 4" aluminum Y connector.



CPT19MAY40

### CPTUNH4000P - Unihose

11' x 4" inner diameter exhaust hose. Hose and tailpipe adapter joined into one continuous piece.



### CPT18AACTDYN - Dynamometer Hose

This new series of exhaust hose is made of a blend of rubber that can withstand the high temperature of a dynamometer when used with a fan-assisted system. Heavy wall thickness increases durability. Can be used in many other applications. 11' x 4" inner diameter hose.



## VEHICLE EXHAUST EXTRACTION SYSTEMS &amp; ACCESSORIES

SUPPLIED BY: CRUSHPROOF TUBING CO.

**Overhead Duct Connectors**

Use to connect to overhead "T".

**Models**

- CPT19MOC30 - 3" Overhead duct connector.
- CPT19MOC40 - 4" Overhead duct connector.
- CPT19MOC50 - 5" Overhead duct connector.



## VEHICLE EXHAUST EXTRACTION SYSTEMS &amp; ACCESSORIES

SUPPLIED BY: HARVEY INDUSTRIES, INC

**Standard Overhead Systems**

An overhead system is easily installed in an existing or new building. A single drop is normally located at the side of the stall approximately 1' behind rear vehicle bumper. The ductwork should be at an elevation of 15' to 16', which would then allow the standard 20' hose drop to attach to either right or left side mounted tailpipes. An overhead drop is installed by slipping the overhead coupler over the appropriate size stub or air flow "T" of the ductwork. The overhead coupler is held in place with a bolt through the assembly. FOR DUAL EXHAUST VEHICLES A "Y" HARNESS SHOULD BE USED IN CONJUNCTION WITH THE OVERHEAD DROP.

**Standard System****Features**

- Versatile and inexpensive.
- Use for a variety of vehicles.
- Accommodates tail pipes and/or stacks.
- Easy to install.

**Models**

- HRVOH-30-47 - 20' x 3" neoprene rubber hose, overhead duct coupler, energy saving damper, 3" x 6-1/2" rubber tailpipe adapter.
- HRVOH-30-57 - 20' x 3" neoprene rubber hose, overhead duct coupler, energy saving damper, 3" x 8-1/2" rubber tailpipe adapter.
- HRVOH-30-L47 - 20' x 3" neoprene rubber hose, overhead duct coupler, lifting elbow, 3" x 6-1/2" rubber tailpipe adapter.
- HRVOH-30-L57 - 20' x 3" neoprene rubber hose, overhead duct coupler, lifting elbow, 3" x 8-1/2" rubber tailpipe adapter.
- HRVOH-40-57 - 20' x 4" neoprene rubber hose, overhead duct coupler, energy saving damper, 3" x 8-1/2" rubber tailpipe adapter.
- HRVOH-40-L57 - 20' x 4" neoprene rubber hose, overhead duct coupler, lifting elbow, 3" x 8-1/2" rubber tailpipe adapter.

**HRVTS-30 - Overhead Exhaust Drop (Telescopic®, 3" Dia. Hose)**

Three lengths of lightweight flexible tubing slide one into another, giving the appearance of one 6' length of tubing attached to the overhead duct. The bottom length of tubing and tailpipe adaptor are non-crush neoprene rubber. Eliminates the hanging "elephant trunks".

**HRVPS-40 - Underground Concealed Exhaust System**

The body of the pipe saddle floor fitting is plastic, molded from high-temperature resistant polyethylene. The top flange and lid of the pipe saddle fitting is cast aluminum with the 5/16" – thick lid having a tensile strength of 35,000 lbs. The lid is attached to the flange with a heavy-gauge, all stainless steel piano hinge for easy maintenance. Includes: (1) molded plastic floor fitting and (1) molded plastic pipe saddle.

**Replacement Hose Assemblies for Underground Systems****Models**

- HRVHA-3 - 8' x 3" inner diameter rubber hose, tailpipe adapter, hose guide.
- HRVHA-4 - 8' x 4" inner diameter rubber hose, tailpipe adapter, hose guide.



## VEHICLE EXHAUST EXTRACTION SYSTEMS & ACCESSORIES

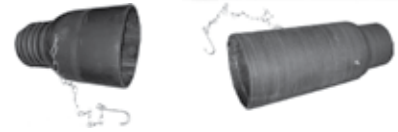
SUPPLIED BY: HARVEY INDUSTRIES, INC

### Tailpipe Adapters

To avoid continual replacement of exhaust hose, tailpipe adapters should be used. Harvey tailpipe adapters are available for all sizes of hose and tubing, and are manufactured in rubber and stainless steel.

#### Models

- HRVAR-6 - AR Series Rubber Stack/Tailpipe adapter. H-Smooth bore mounting base for use with smooth bore hose. 6" outer diameter hose.
- HRVHF-250 - Rubber tailpipe adapter for tailpipes up to 2-1/2" outer diameter.
- HRVHF-300 - Rubber tailpipe adapter for tailpipes up to 3" outer diameter.
- HRVHF-350 - Rubber tailpipe adapter for tailpipes up to 3-1/2" outer diameter.
- HRVHF-400 - Rubber tailpipe adapter for tailpipes up to 4" outer diameter.
- HRVHF-477 - Rubber oval shaped (3" x 6-1/2") for twin tailpipes. Fits 3" or 4" outer diameter hose.
- HRVHF-577 - Rubber oval shaped (3" x 8-1/2") for twin tailpipes. Fits 3" or 4" outer diameter hose.



HRVHF-477

HRVAR-6



HRVHF-250

### HRVH456 - Thru-The-Door Exhaust System

The Harvey Thru-The-Door System is designed for service stations and garages where the door is directly behind the vehicle. Includes: Door port, 8' x 3" Neoprene rubber hose, and 3" x 6-1/2" Tailpipe adapter.



### "TWIST-LOCK" Non-Crush Rubber Exhaust Hose

"TWIST-LOCK" hose represents the latest advancements in technology and fabrication of rubber hose for our industry.

#### Features

- Under normal service conditions the hose is heat resistant in excess of 500°F.
- The "TWIST-LOCK" feature enables an individual to connect several lengths of hose together without the use of couplers.

#### Models

- HRVH-2011 - 11'L x 2" inner diameter Twist-Lock hose.
- HRVH-2055 - 11'L x 2" inner diameter Twist-Lock hose. 5 pack.
- HRVH-2511 - 11'L x 2-1/2" inner diameter Twist-Lock hose.
- HRVH-2555 - 11'L x 2-1/2" inner diameter Twist-Lock hose. 5 pack.
- HRVH-3011 - 11'L x 3" inner diameter Twist-Lock hose.
- HRVH-3044 - 11'L x 3" inner diameter Twist-Lock hose. 4 pack.
- HRVH-3511 - 11' x 3-1/2" inner diameter Twist-Lock hose.
- HRVH-3533 - 11' x 3-1/2" inner diameter Twist-Lock hose. 3 pack.
- HRVH-4011 - 11' x 4" inner diameter Twist-Lock hose.
- HRVH-4022 - 11' x 4" inner diameter Twist-Lock hose. 2 pack.
- HRVH-5010 - 10' x 5" inner diameter Non-Twist-Lock hose.
- HRVH-6011 - 11' x 6" inner diameter Non-Twist-Lock hose.



### "Y" Harness

For use with dual exhausts.

#### Features

- High temp, non-crush, twist lock rubber hose.
- Couples easily to 3" or 4" hose.

#### Models

- HRVH-30-3-47 - "Y" Harness. Includes: (2) 4' x 3" hose, (1) 2' x 3" hose, (1) "Y" fitting, (2) 3" x 6-1/2" adapter.
- HRVH30-3-57 - "Y" Harness. Includes: (2) 4' x 3" hose, (1) 2' x 3" hose, (1) "Y" fitting, (2) 3" x 8-1/2" adapter.



## VEHICLE EXHAUST EXTRACTION SYSTEMS &amp; ACCESSORIES

SUPPLIED BY: HARVEY INDUSTRIES, INC

**Automatic Retractable Hose Reels**

Offers one of the most convenient methods available for extracting harmful exhaust fumes and gases from all types of service areas. The exhaust hose supplied with the reel is fabricated of silicone fiber-glass with an internal wire helix and rubber coated. Includes: Retracting hose reel with automatic recoil, lock, latch, silicone fiber-glass exhaust hose, 4' x 6" duct connecting exhaust tube with clamps, tailpipe adapter, stop collar with clamps.

**Features**

- The spring-operated hose reel is designed for years of trouble-free service and can be adapted to ALL types of vehicles.
- High heat resistant hose to 600°F.
- Shipped prewound.

**Models**

- HRVRHR4R - Reel and components, 25' x 4" inner diameter hose assembly.
- HRVRHR4RD9X - Reel and components, 25' x 4" inner diameter hose assembly with direct drive blower.



HRVRHR4RD9X

**Carbon Monoxide and Toxic Fume Exhaust Blowers**

Clockwise rotation wheel and bottom horizontal discharge housing is standard. Discharge may be changed to any one of eight directions at job site or specified on order. HRVBD-7 and HRVBD-8 belt drive blowers are either forward curve or radial blade. All other belt drive blowers are backward curve.

**Features**

- Housings, wheels, and frames are welded providing heavy construction and assuring solid, rattle free units.
- Wheels are supported by heavy cast iron hubs and are static and dynamically balanced.
- Equipped with variable speed drives.

**Models**

- HRVBD-7 - Single phase 3/4 hp belt drive blower. Wheel diameter: 7", Weight: 70 lbs.
- HRVBD-7-3 - Three phase 3/4 hp belt drive blower. Wheel diameter: 7", Weight: 70 lbs.
- HRVBD-8 - Single phase 1 hp belt drive blower. Wheel diameter: 9", Weight: 75 lbs.
- HRVBD-8-3 - Three phase 1 hp belt drive blower. Wheel diameter: 9", Weight: 75 lbs.
- HRVBD-9 - Single phase 1-1/2 hp belt drive blower. Wheel diameter: 10", Weight: 100 lbs.
- HRVBD-9-3 - Three phase 1-1/2 hp belt drive blower. Wheel diameter: 10", Weight: 100 lbs.
- HRVBD-11 - Single phase 2 hp belt drive blower. Wheel diameter: 12", Weight: 150 lbs.
- HRVBD-11-3 - Three phase 2 hp belt drive blower. Wheel diameter: 12", Weight: 150 lbs.
- HRVBD-12 - Single phase 2 hp belt drive blower. Wheel diameter: 15", Weight: 180 lbs.
- HRVBD-12-3 - Three phase 2 hp belt drive blower. Wheel diameter: 15", Weight: 180 lbs.
- HRVBD-13 - Single phase 3 hp belt drive blower. Wheel diameter: 15", Weight: 200 lbs.
- HRVBD-13-3 - Three phase 3 hp belt drive blower. Wheel diameter: 15", Weight: 200 lbs.
- HRVBD-14 - Single phase 3 hp belt drive blower. Wheel diameter: 18", Weight: 295 lbs.
- HRVBD-14-3 - Three phase 3 hp belt drive blower. Wheel diameter: 18", Weight: 295 lbs.
- HRVBD-15 - Single phase 5 hp belt drive blower. Wheel diameter: 18", Weight: 315 lbs.
- HRVBD-16 - Single phase 5 hp belt drive blower. Wheel diameter: 20", Weight: 335 lbs.
- HRVBD-17 - Single phase 5 hp belt drive blower. Wheel diameter: 22", Weight: 360 lbs.



Belt Drive Exhaust Blower

**HRVHDBGK3 - Heavy-Duty, Portable Garage Exhaust Kits**

For use in small garages where Thru-The-Door System is inadequate and customer does not want an overhead system. Kit includes: 1 hp direct drive blower, appropriate inlet box, (2) 20' x 3" inner diameter neoprene rubber hoses, rubber tailpipe adapter.



VEHICLE EXHAUST EXTRACTION SYSTEMS & ACCESSORIES

SUPPLIED BY: JOHN DOW INDUSTRIES

**EuroVent Vehicle Exhaust Extraction System**

EuroVent is an exhaust ventilation system that incorporates a cast aluminum exhaust rail and a sliding ventilation crab. The rail is installed overhead and along the service bays, and is connected to a high-efficiency exhaust fan. The sliding crab, equipped with an exhaust hose and tailpipe adapter, rolls along the rail and can be positioned at any service bay where ventilation is needed.

The EuroVent system can be designed to fit the requirements of any service department, large or small. Plus a single EuroVent ventilation crab can service as few or as many bays required, and maintain a professional appearance.

*Most systems can be engineered by using the following components:*



**Exhaust Hose**

Lightweight crushproof hose for use with sliding crabs and reels. Withstands temperatures up to 150°C.

**Models**

- JDOCW3252 - 3" inner diameter hose, 25 ft. long.
- JDO654875 - 4" inner diameter hose, 25 ft. long.



**JDOALU13 - Aluminum Exhaust Rail**

13' extruded aluminum rail includes neoprene seal. Designed for most automotive applications requiring 3" or 4" inner diameter hose.



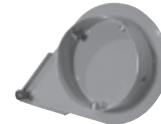
**JDOTL170A - Rail Connecting Flange**

Used for joining aluminum rails together.



**JDOFL170A - Flange Stop**

Bolts to end of exhaust rail to seal the rail and prevent the sliding crab from derailing.



**JDOFCL170A - Duct Connecting Flange**

Connects exhaust rail to other ducting.



**Sliding Ventilation Crab for Hose**

The sliding ventilation crabs eliminate the need for overhead drops and the ductwork required to install them. Because the crabs slide easily on the rail, installation takes only a few minutes.

**Models**

- JDOCSA17075 - Sliding Ventilation Crab for 3" inner diameter hose.
- JDOCSA170100 - Sliding Ventilation Crab for 4" inner diameter hose.



**JDOCARALU75F - Sliding Crab Hose Reel**

Reel with 3" diameter x 23' hose.



**Hose Support**

Keeps hose and tailpipe nozzle off of the floor.

**Models**

- JDOATS75 - Hose Support for 3" inner diameter hose.
- JDOATS100 - Hose Support for 4" inner diameter hose.



12-6



## VEHICLE EXHAUST EXTRACTION SYSTEMS &amp; ACCESSORIES

SUPPLIED BY: JOHN DOW INDUSTRIES

**JDOFCA170A - Fan Connecting Flange**

Connects rail mounted fans directly to aluminum rails.

**Tailpipe Adapters**

Protects hose and tailpipe.

**Models**

- JDOEV350 - Tailpipe Adapter for 3" inner diameter hose.
- JDOEV450 - Tailpipe Adapter for 4" inner diameter hose.

**Duct Connection Nozzles**

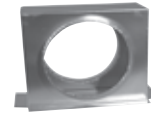
Connects ductwork to aluminum rail.

**Models**

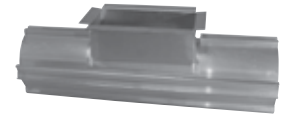
- JDOOFVENTTOP - Top connection.
- JDOOFVENTSID - Side connection.
- JDOALU3FTVTA - Vent tap assembly.



JDOOFVENTTOP



JDOOFVENTSID



JDOALU3FTVTA

**Mounting Ceiling Brackets for Aluminum Rails**

Specially designed brackets for ceiling or wall mounting of aluminum rails. Ceiling brackets are adjustable.

**Models**

- JDOCB1222 - Mounting Ceiling Bracket for aluminum rails. Adjusts 12-22".
- JDOCB2548 - Mounting Ceiling Bracket for aluminum rails. Adjusts 25-48".

**JDOB5K10 - Hose Balancer**

Retracts hose off of the floor when not in use.

**Underground Exhaust System**

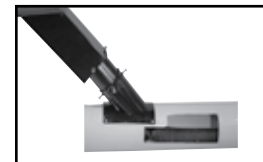
"Saddle-Style" Disappearing Underground Exhaust System. Each system comes complete with 3-piece floor assembly, 8' Crushproof exhaust hose, tailpipe adapter and hose insertion guide.

**Features**

- EuroVent 3-piece telescoping design provides up to 5" of adjustability, making installation easier and faster.
- EuroVent in-ground system has a 3-step finishing process for superior corrosion protection.
- EuroVent patented rubber door design.

**Models**

- JDOEVU3 - 3" Complete Underground System.
- JDOEVU4 - 4" Complete Underground System.



JDOEVU3



3 Piece Floor Assembly

**JDOEV5100 - Portable Exhaust Extraction System**

This easy-to-use portable exhaust extraction system is a practical and affordable solution for effectively removing toxic exhaust fumes from auto repair facilities and other work areas where toxic fume removal is needed. Positioned next to the vehicle, the high-output suction fan captures fumes and discharges them safely up to 30' away. 3/4 hp fan produces 330 c.f.m. air flow.



## TWO-WAY RADIOS & ACCESSORIES

SUPPLIED BY: MERCHANT & MERCHANT/KENWOOD

### Pro-Talk Two-Way Radios

Simply the best communication tool for heavy-duty work environments. Easy-to-use compact, ergonomic contours with a natural comfortable hold.

#### Features

- 56 Pre-Stored frequencies.
- QT/DQT Encode/Decode.
- Internal VOX/Hands free ready.
- Wireless cloning.
- Battery save and low battery warning.
- Li-Ion battery.
- Super Lock.
- Channel scan.
- Small & lightweight.
- Two color LED.

#### Models

- KENTK3230 - ProTalk UHF 1.5 Watt, 2 Channel two-way radio. Range is up to 5 miles. Includes: Rechargeable Li-Ion battery, rapid rate desktop charger, spring action belt clip, two year warranty, Federal Communication Commission license information.
- KENTK32LU15P - ProTalk UHF 2 Watt, 15 Channel two-way radio. Range is up to 6 miles. Includes: 3-hour rechargeable battery pack with Li-Ion battery, desktop fast charger, spring action belt clip, removable antenna, two year warranty, Federal Communication Commission license information.
- KENTK32LU2P - ProTalk UHF 2 Watt, 2 Channel two-way radio. Range is up to 6 miles. Includes: 3-hour rechargeable battery pack with 1500 mAh NiMH battery, desktop fast charger, spring action belt clip, removable antenna, two year warranty, Federal Communication Commission license information.



KENTK32LU2P

### Headsets & Speaker Microphones

Headsets and Microphones keep your hands free for other tasks. Many models available with different features to fit your specific needs.

#### Models

- KENEMC3 - Push-to-talk clip microphone with earphone. Clips to your lapel or collar.
- KENKHS22 - Behind-the-Head Headset with flexible Boom Microphone and in-line push-to-talk, single ear receiver, low profile wire head band: VOX-ready.
- KENKHS25 - D-Ring Ear Hanger with push-to-talk and Boom Microphone.
- KENKHS26 - Clip microphone with earbud.
- KENKHS27 - D-Ring Headset with in-line push-to-talk microphone.
- KENKMC21 - Compact speaker microphone.



KENKMC21



KENKHS27



KENKHS25

### Six Unit Charger Trays

Charger trays allow you to charge up to six two-way radio batteries at once.

#### Models

- KENKMB25 - Six-Unit Charger Adapter. Fits TK3200 two-way radio.
- KENKMB27 - Six Unit Charger. Fits TK3230 two-way radio.



KENKMB25



KENKMB27

## TWO-WAY RADIOS & ACCESSORIES

SUPPLIED BY: PRO MARKETING / MOTOROLA

### CLS Series Two-Way Radios

CLS Series two-way radios are designed with business productivity in mind - providing functionality at the push of a button. Includes: rechargeable battery, desktop charging tray, wall adapter, swivel carry holster, user manual.

#### Features

- Lithium ion battery.
- 121 Interference Eliminator Codes.
- Lock button - disables scroll and menu functions.
- Lighted display screen.
- Accessory-ready dual pin jack.
- Display includes: battery level meter, lock mode indicator, and channel/code indicator.
- Indicator/Alert features: audible low battery alert tone, multiple audible call alerts (3).
- Up to 5 miles of range outdoors and 200,000 sq.ft. indoors or 15 floors indoors.

#### Models

- MROCLS1110 - 1 channel business two-way radio.
- MROCLS1410 - 4 channel business two-way radio. Features: VibraCall alert, VOX hands-free with selectable sensitivity, scan.



MROCLS1110

### XTN Series Two-Way Radios

Meet the next generation in two-way radios, featuring state-of-the-art technology from the company that's been the leader in two-way radio technology for over 70 years. If getting your job done means communicating with others around the shop/lot, the Motorola XTN Series business two-way radios can help you work smarter and faster. All units include: 1500 mAh NiMH rechargeable battery, 10-hour plug-in charger, 10-hour desktop charging tray, Swivel belt holster with 3" spring clip, accessory brochure, and user manual. One year warranty.

#### Features

- Designed to Mil-Spec 810 and IP54 specifications.
- 38 analog and 83 digital Interference Eliminator Codes.
- Keypad lock.
- 3 audible call tones.
- VOX (hands-free use with accessories) with 3 sensitivity levels.
- Cloning compatible (multi-unit charger required).

#### Models

- MROXU1100 - 1 watt of power/1 channel two-way radio. Range up to 5 miles outdoors / 200,000 sq.ft. or 15 floors indoors. 56 selectable UHF frequencies.
- MROXU2100 - 2 watts of power/1 channel two-way radio. Range up to 6 miles outdoors / 250,000 sq.ft. or 20 floors indoors. Scramble settings to reduce eavesdropping. 56 selectable UHF frequencies.
- MROXU2600 - 2 watts of power/6 channel two-way radio. Range up to 6 miles outdoors / 250,000 sq.ft. or 20 floors indoors. Scramble settings to reduce eavesdropping, Channel scan with selectable scan list, Ability to program for only 2, 3, 4 or 5 channels only. 56 selectable UHF frequencies.
- MROXV1100 - 1 watt of power/1 channel two-way radio. Range up to 5 miles outdoors / 150,000 sq.ft. or 8 floors indoors. 27 selectable VHF frequencies.



MROXU1100

### MRORDU2080D - RDX Series Two-Way Radio

The Motorola RDX Series on-site two-way Business Radios are designed for heavy-duty, everyday industrial use. Operating on Federal Communications Commission frequencies reserved exclusively for business use, these powerful two-way radios help businesses keep operations on schedule, maximize job shift productivity, enhance security, and increase overall customer satisfaction. 2 watts of power - Covers up to 250,000 sq.ft. or 20 floors indoors. 8 channel display radio. Features 122 privacy codes to help ensure clear signal. Includes: Lithium Ion battery, belt clip, charging adapter, standard drop-in charging tray, user guide, and safety sheet.



## TWO-WAY RADIOS & ACCESSORIES

SUPPLIED BY: PRO MARKETING / MOTOROLA

### Battery Chargers

#### Models

- MRO53872 - 10-Hour desktop charging tray. For XTN Series radios.
- MRO53875 - 2-Hour desktop charging tray. For XTN Series radios.
- MRO53879 - Multi-Unit (6) charging tray. For XTN Series radios.
- MRO56531 - Multi-Unit (6) charging tray. For CLS Series radios.
- MRORLN6304 - 2-Hour rapid charger kit. For RDX Series radios.
- MRORLN6309 - Multi-Unit (6) charging tray. For RDX Series radios.



MRORLN6304



MRORLN6309

### Replacement Batteries

#### Models

- MRO53871 - Ni-CD Rechargeable battery pack. For XTN Series radio.
- MRO56557 - Lithium Ion rechargeable battery. For CLS Series radio.
- MRORLN6351 - Standard capacity lithium Ion battery. For RDX Series radio.



MRORLN6351

### Audio Accessories

Audio accessories for XTN and CLS series radios. Various styles of earpieces and speakers for your two-way radio. Keeps hands free.

#### Models

- MRO53815 - Lightweight headset with boom microphone.
- MRO53862 - Remote speaker microphone.
- MRO53863 - Earpiece with microphone.
- MRO53865 - Headset with swivel boom microphone.
- MRO53866 - Earbud with clip microphone and push-to-talk.
- MRO56517 - Earpiece with inline push-to-talk microphone.



MRO56517



MRO53862

## SERVICE CARTS

SUPPLIED BY: BORROUGHS CORPORATION

## Service Utility Carts

Borroughs Service Utility Carts have 5" rubber tires with casters for easy going. They have two shelves, each 3.5" deep and the top shelf can be inverted for a tray style surface. Also feature push-bar type handle for full control.

## Models

- BGH00160-043 - Service Utility Cart 16"W x 32"H x 30"D.
- BGH00240-043 - Service Utility Cart 24"W x 32"H x 30"D.



BGH00160-043

## SERVICE CARTS

SUPPLIED BY: EQUIPTO

## EQG145 - Utility Cart

Heavy-duty, rugged cart for easy, portable use. Handles the most demanding jobs. Trucks feature 4" deep reversible steel trays with beaded edges for extra strength, quality one-piece tray construction, strong tubular posts and integral handles with smooth rolling 5" rubber casters two swivel and two stationary.



## SERVICE CARTS

SUPPLIED BY: LYON WORKSPACE PRODUCTS

## Service Carts

Transport tools and parts with either of these heavy-duty service carts. The solid steel construction and large casters allow you to navigate the harshest environments. They feature tubular handles and two 3" deep open type trays.

## Models

- LYO3030 - Service Cart: 16"W x 32"H x 30"D.
- LYO3033 - Service Cart: 24"W x 32"H x 36"D.



LYO3030

## SERVICE CARTS

SUPPLIED BY: SHURE MANUFACTURING CORPORATION

## Shure Technician Carts

Technician Carts combine maximum storage capacity and portability with an all-welded design that provides stability and durability for any shop environment.

## Features

- Complete with top and bottom shelves and lockable drawer.
- 3" castors; shelves have a 1-1/2" lip on all sides.
- Includes handle and top shelf mat.

## Models

- SHU800019 - Standard Technician Cart. 29-1/4"W x 34"H x 18-1/4"D without handle.
- SHU800020 - Deluxe Technician Cart. Offers an additional drawer and a lower storage enclosure with lockable doors. 29-1/4"W x 34"H x 18-1/4"D without handle.



SHU800020

## SHU973726 - Tire Trolley

Increase storage space while safely and securely transporting both new and used tires and wheels at one time. Transport 12 to 14 tires. Heavy-duty construction and all-welded legs. 54-3/4"W x 62"H x 25-5/8"D.



## FLOOR SCRUBBERS/SWEEPERS/VACUUMS

SUPPLIED BY: MINUTEMAN INTERNATIONAL, INC.

### E Series Walk Behind Floor Scrubbers

Designed to be efficient, environmentally conscious, economic, and ergonomic.

#### Features

- Sleek design provides an excellent line of sight to the area that needs to be cleaned.
- Flow-optimized recovery tanks with Anti-Foam System (AFS) protects the vacuum motor from damage.
- Easy-to-understand controls ensure that the machine is simple to operate.
- For safety, when the on-board charger is plugged in, the machine is not operable.
- Low brush deck design is ideal for cleaning underneath obstacles such as shelves, warehouse racks and other stationary objects.

#### Models

- MNTMC17115-0 - 17" Automatic Walk Behind Floor Scrubber. Brush type: Disc, Brush r.p.m.: 180 r.p.m., Solution capacity: 12 gallons, Recovery capacity: 13 gallons, Weight with batteries: 365 lbs., Dimensions: 44.4"L x 18.8"W x 42.3"H.
- MNTE20DTDQP - 20" Automatic Walk Behind Floor Scrubber. Brush type: Disc, Brush r.p.m.: 180 r.p.m., Solution capacity: 12 gallons, Recovery capacity: 13 gallons, Weight with batteries: 372 lbs., Dimensions: 47.4"L x 21.3"W x 42.3"H.
- MNTE26QP - 26" Automatic Walk Behind Floor Scrubber. Brush type: Disc, Brush r.p.m.: 180 r.p.m., Solution capacity: 19 gallons, Recovery capacity: 19.5 gallons, Weight with batteries: 677 lbs., Dimensions: 68"L x 79"W x 53.4"H.



MNTE26QP

### Walk Behind Indoor/Outdoor Litter Vacuums

Excellent on turf or hard surfaces. Unequaled vacuum power combined with superior maneuverability makes this the best choice in litter cleanup.

#### Features

- Vacuum housing is constructed of a tough lightweight ABS plastic and contains a foam backed steel liner in critical wear areas which provides exceptional durability while reducing noise levels and vibration.
- The chassis is constructed of 12 gauge welded steel providing solid and reliable framework.
- Includes: variable height adjustment front caster for flexible use on hard surfaces and a large capacity, 11 cu. ft. felt bag.

#### Models

- MNTPV0165BF - Manual 30" Litter Vacuum with Bag Platform. 6.5 hp engine. 172 lbs.
- MNTPV8708K - Manual 30" Litter Vacuum with Bag Platform. 8 hp engine. 165 lbs.



MNTPV0165BF

### MNTC29085-05 - Wet/Dry Vacuum, Series 290 (15 gallon)

15 gallon polyethylene tank wet/dry vacuum. A complete vacuum tool kit comes with each unit.

Includes: 10' hose, wand, crevice tool, 3" round brush, upholstery tool, 14" brush tool and 14" squeegee.



## FLOOR SCRUBBERS/SWEEPERS/VACUUMS

SUPPLIED BY: NSS ENTERPRISES, INC.

### NSS6306302 - Sidewinder Battery Powered Sweeper

The easy-to-use Sidewinder 27 MB battery-powered sweeper, with its counter-rotating brush system, picks up everything from fine dust to large debris in a single pass. Its 27.5-inch (70 cm) sweeping path cleans 30,140 square feet per hour on both carpeted and hard floors, indoors and out. 12-volt, 115-amp battery provides over 2 hours of continuous runtime. On-board battery charger.



## FLOOR SCRUBBERS/SWEEPERS/VACUUMS

SUPPLIED BY: NSS ENTERPRISES, INC.

**Automatic Scrubbers**

NSS Automatic Scrubbers are famous for their quality, performance, and simplicity. Each is built for the rigors of heavy-duty commercial and industrial use. Instead of trendy bells and whistles, NSS machines feature reliable mechanisms to simplify operator training and reduce repair requirements.

**Features**

- Oversized solution and recovery tanks.
- Powerful vacuum motors and swing squeegees.
- Standard on-board battery chargers simplify recharging.

**Models**

- NSS2602656 - 26" Automatic Scrubber. 26" scrub path, straight or curved squeegee, 25 gallon solution tank, 27 gallon recovery tank, (2) .75 hp brush motors, .75 hp vacuum motors, (4) 6 volt 225 AH batteries.
- NSS2708204 - 27" Automatic Scrubber. 27" scrub path, straight or curved squeegee, 30 gallon solution tank, 33 gallon recovery tank, (2) .75 hp brush motors, .75 hp vacuum motors, (6) 6 volt batteries - choose 225 AH or 325 AH.
- NSS3302204 - 33" Automatic Scrubber. 33" scrub path, straight urethane or curved gum-rubber squeegee, 30 gallon solution tank, 33 gallon recovery tank, (2) .75 hp brush motors, .75 hp vacuum motors, (6) 6 volt batteries - choose 225 AH or 325 AH.
- NSS7602904 - 29" Automatic Ride-On Scrubber. 29" scrub path with 33" curved blade squeegee, 29 gallon solution tank, 32 gallon recovery tank, 1 hp drive motor with three forward speeds, 2 hp brush motor, 300 r.p.m. brush speed, (6) 6 volt batteries - choose 225 AH or 325 AH.



NSS3302204

## AIR CIRCULATORS/FANS/PORTABLE HEATERS

SUPPLIED BY: MARLEY ENGINEERING PRODUCTS

**Heavy-Duty, Industrial and Commercial Air Circulators**

High performance fans available in oscillating, non-oscillating, floor, and ceiling models. Ideal for providing general cooling in occupied open areas.

**Features**

- Totally enclosed, permanently lubricated split capacitor, ball bearing motor.
- Coated steel blades.
- Pull chain switch.
- 3 conductor SJT type cord.
- Fan head tilt: Pedestal 10° down or 28° up; Wall mount 40° down or 0° up.

**Models**

- LEE24ACI - 24" I-Beam Mount Air Circulator. 1/4 hp, 2-speed, 115 volt motor.
- LEE24ACP-U - 24" Pedestal Mount Air Circulator. 1/4 hp, 2-speed, 115 volt motor.
- LEE24ACWU - 24" Wall Mount Air Circulator. 1/4 hp, 2-speed, 115 volt motor.
- LEE30ACP-U - 30" Pedestal Air Circulator. 1/4 hp, 2-speed, 115 volt motor.
- LEE30ACWU - 30" Wall Mount Air Circulator. 1/4 hp, 2-speed, 115 volt motor.
- LEE56HRCF - 56" Commercial Ceiling Fan. 120 volt, 330 maximum r.p.m., 96 watts, white.
- LEEI-12 - 12" Industrial Floor Circulators. 1 hp, 3-speed, 115 volt motor.
- LEEI-18 - 18" Industrial Floor Circulators. 1 hp, 3-speed, 115 volt motor.
- LEEI-20 - 20" Industrial Floor Circulators. 1 hp, 3-speed, 115 volt motor.
- LEELCHD24OWB - 24" Wall Mount Oscillating Air Circulator. 1/4 hp, 3-speed, 120 volt motor.
- LEELCHD30OPB - 30" Pedestal Mount Oscillating Air Circulator. 1/4 hp, 3-speed, 120 volt motor.
- LEEMACH-30 - 30" High Performance Air Circulator Head. 1/3 hp, 2-speed motor.



Pedestal Mount

**LEEMMHD1502T - Portable Utility Heater**

Fan-forced portable heater features a grounded plug (3 prong) and 6' cord for ease of use and portability. This heater has two heat settings and an automatic thermostat for heating level control. The fan can also be operated without heat for just air circulation. Additional safety features include a tip over switch and thermal high limit. This heater has a high output of 1500 watts (5120 BTU's) and a low output of 1300 (4437 BTU's) and draws 12.5 or 10.8 amps. Heavy-duty grill keeps hands and fingers out. Tip over switch shuts off heater when its knocked over. High Limit thermal cutout turns off the heater if the heater is blocked or over-heats. Safety buzzer warns when heater is knocked over or too hot.



## RECYCLING & ENVIRONMENTAL RECEPTACLES

SUPPLIED BY: BUSCH SYSTEMS INTERNATIONAL INC.

### Waste Watcher Centralized Recycling

Available in three colors in an attractive streamlined look. Dimensions: 11"L x 20"W x 30"H (23 gallons)

#### Features

- Minimum 25-55% recycled content.
- The size and shape allow for efficient use of space in high traffic areas.
- Custom openings to meet your specific needs.
- Lockable Lid available; making it a document destruction container.
- Plastic Liners Available. Model # BSSWWPB25X36 (NATURAL)

#### Models

- BSSWW3002 - 23 gallon Waste Watcher body, blue.
- BSSWW3012 - 23 gallon Waste Watcher body, green.
- BSSWW3080 - 23 gallon Waste Watcher body, grey.



Waste Watcher

### Waste Watcher Lids

Lids for Waste Watcher recycling containers. Five types of lids to choose from.

#### Models

- BSSWWLDIA02 - Diamond Waste Watcher lid, blue.
- BSSWWLDIA12 - Diamond Waste Watcher lid, green.
- BSSWWLDIA28 - Diamond Waste Watcher lid, orange.
- BSSWWLMIX02 - Mixed Waste Watcher lid, blue.
- BSSWWLMIX12 - Mixed Waste Watcher lid, green.
- BSSWWLROU02 - Round Waste Watcher lid, blue.
- BSSWWLROU12 - Round Waste Watcher lid, green.
- BSSWWLROU80 - Round Waste Watcher lid, grey.
- BSSWWLSLT02 - Slot Waste Watcher lid, blue.
- BSSWWLSLT80 - Slot Waste Watcher lid, grey.
- BSSWWLSQ80 - Square Waste Watcher lid, grey.



Waste Watcher - Lids

### Smart Sort Recycling Center

The Smart Sort is an ideal container for centralized recycling stations. 22 gallon capacity. Constructed of durable, dent resistant polyethylene.

#### Features

- Minimum 25-55% recycled content.
- They fit neatly against a wall or can fit back to back making a perfect island of recycling containers.
- The lid and labels system creates a clean sort of recyclables, ensuring the right recyclables go in the right place.

#### Models

- BSSSMTBODY - 22 gallon body, grey. Dimensions: 15.5"L x 14"W x 33.5"H (with lid).
- BSSSMTL - 22 gallon lid, grey.



Smart Sort Center

### Smart Sort Openings

The Smart Sort lids give you a quality sort of recyclables at your recycling station. The optional labels, using a picture and text, minimize lazy tosses and give you a quality sort of your recyclables. There are 4 openings to choose from; available in a variety of colors.

#### Models

- BSSSMTOMIX02 - Mixed opening, blue.
- BSSSMTOMIX12 - Mixed opening, green.
- BSSSMTOMIX23 - Mixed opening, black.
- BSSSMTOR02 - Round opening, blue.
- BSSSMTOR12 - Round opening, green.
- BSSSMTOR23 - Round opening, black.
- BSSSMTOSLT02 - Paper opening, blue.
- BSSSMTOSLT12 - Paper opening, green.
- BSSSMTOSLT23 - Paper opening, black.
- BSSSMTOWAS23 - Waste opening, black.



Smart Sort Labels

### Smart Sort Label

Labeling the lid of your container will minimize those lazy tosses.

#### Features

- You can choose from 10 different labels.
- Labels reduce contamination of different recyclables and guarantee a quality sort of recyclables.

#### Models

- BSSSQCANS - Cans Smart Sort label.
- BSSSQCB - Cans and bottles Smart Sort label.
- BSSSQCG - Cans and glass Smart Sort label.
- BSSSQGLASS - Glass Smart Sort label.
- BSSSQMIXREC - Mixed recyclables Smart Sort label.
- BSSSQMXPAP - Mixed paper Smart Sort label.
- BSSSQNPAPER - Newspaper Smart Sort label.
- BSSSQPLASTI - Plastic Smart Sort label.
- BSSSQWASTE - Waste Smart Sort label.
- BSSSQWPAPER - White paper Smart Sort label.



Smart Sort Openings



## RECYCLING & ENVIRONMENTAL RECEPTACLES

SUPPLIED BY: BUSCH SYSTEMS INTERNATIONAL INC.

### Premium Containers

Mid-sized container designed for the collection of an assortment of materials in various high traffic areas. Dimensions: 20.5"L x 20.5"W x 34"H, 36 gallons. Choose from round or square opening. Available in sandstone and granite grey colors.

#### Features

- Minimum 25-55% recycled content.

#### Models

- BSS559A32 - Round opening, granite grey.
- BSS559A33 - Round opening, sandstone.
- BSS559B32 - Square opening, granite grey.
- BSS559B33 - Square opening, sandstone.



### Upright Series

Sturdy containers suitable for a number of applications. Available in 7, 14 and 26 gallon capacity. 7 gallon is small enough to sit up against a desk, while the 14 and 26 gallon are best suited for centralized locations.

#### Features

- Minimum 25-55% recycled content.
- Optional metal snap handles and lid available.
- Made of high density polyethylene.

#### Models

- BSS7UP05 - 7 gallon upright body, blue. Dimensions: 11.38"L x 11.38"W x 14.25"H.
- BSS7UP12 - 7 gallon upright body, green. Dimensions: 11.38"L x 11.38"W x 14.25"H.
- BSS7UPL05 - 7 gallon upright lid, blue.
- BSS7UPL12 - 7 gallon upright lid, green.
- BSS7UPHANST - 7 gallon upright handle set.
- BSS14UP05 - 14 gallon upright body, blue. Dimensions: 14.5"L x 14.5"W x 18"H.
- BSS14UP12 - 14 gallon upright body, green. Dimensions: 14.5"L x 14.5"W x 18"H.
- BSS14UPL05 - 14 gallon upright lid, blue.
- BSS14UPL12 - 14 gallon upright lid, green.
- BSS14UPHANST - 14 gallon upright handle set.
- BSS26UP05 - 26 gallon upright body, blue. Dimensions: 17.25"L x 17.25"W x 22.5"H.
- BSS26UP12 - 26 gallon upright body, green. Dimensions: 17.25"L x 17.25"W x 22.5"H.
- BSS26UP20 - 26 gallon upright body, grey. Dimensions: 17.25"L x 17.25"W x 22.5"H.
- BSS26UPL05 - 26 gallon upright lid, blue.
- BSS26UPL12 - 26 gallon upright lid, green.
- BSS26UPL20 - 26 gallon upright lid, grey.
- BSS26UPHANST - 26 gallon upright handle set.



### Super Sorter Series

Attractive, durable and low maintenance. Suited for any centralized recycling or waste collection.

#### Features

- Minimum 25-55% recycled content.
- Excellent for high traffic areas.
- Indoor/Outdoor use.
- Signage available.
- Multiple opening variations.
- Will not rust or dent.
- Soft and hard ground mounting.
- Durable plastic liner included.
- Optional wheels available.

#### Models

- BSS1IN132 - 30 gallon One-in-One unit, granite grey.
- BSS1IN133 - 30 gallon One-in-One unit, sandstone.
- BSS2IN132 - 60 gallon Two-in-One unit, granite grey.
- BSS2IN133 - 60 gallon Two-in-One unit, sandstone.
- BSS3IN132 - 90 gallon Three-in-One unit, granite grey.
- BSS3IN133 - 90 gallon Three-in-One unit, sandstone.
- BSSSSSIGNAGE - Metal sign frame.
- BSSSSMOUNT - Soft or hard ground mounts.
- BSSSSCASTERS - Bottom casters.



## RECYCLING & ENVIRONMENTAL RECEPTACLES

SUPPLIED BY: BUSCH SYSTEMS INTERNATIONAL INC.

### Better Than Stone Outdoor Containers

The new outdoor waste/recycling collector. Dimensions: 24"L x 24"W x 41.5"H, 45 gallon.

#### Features

- Minimum 25-55% recycled content.
- Vertical opening helps keep water from collecting inside.
- Easy to open hinged lid makes it convenient for emptying.
- Lighter than stone and concrete bins, making it easy to move to different areas.
- Heavy, rugged design is resistant from breakage and wind.
- Comes with bag hooks.

#### Models

- BSSBTS32 - Waste/recycle can, granite grey.
- BSSBTS33 - Waste/recycle can, sandstone.



### Curbside Recycling Containers

Curbside recycling bins from Busch Systems are built to last and designed to enhance your curbside and "blue box" programs. With such a variety to choose from, these top quality recycling bins are ideal for all varieties of waste reduction programs including municipal recycling. Each of our curbside recycling bins have a 35% minimum recycled content.

#### Features

- Cross stacks.
- Bottom impact feet.
- Optional lid available for most models.
- SIR Series features four handles and extra handle ribbing for extra durability.

#### Models

- BSSTRUE1401 - True14. 14 gallon curbside recycling container, blue. Dimensions: 19.75"L x 15.75"W x 13.5"H.
- BSSTRUE1412 - True14. 14 gallon curbside recycling container, green. Dimensions: 19.75"L x 15.75"W x 13.5"H.
- BSSTRUE1801 - True18. 18 gallon curbside recycling container, blue. Dimensions: 23"L x 16"W x 14.25"H.
- BSSTRUE1812 - True18. 18 gallon curbside recycling container, green. Dimensions: 23"L x 16"W x 14.25"H.
- BSSSIR2101 - SIR21. 21 gallon curbside recycling container, blue. Dimensions: 22.25"L x 17.25"W x 15.5"H.
- BSSSIR2112 - SIR21. 21 gallon curbside recycling container, green. Dimensions: 22.25"L x 17.25"W x 15.5"H.
- BSSSIR2401 - SIR24. 24 gallon curbside recycling container, blue. Dimensions: 22.25"L x 17.25"W x 17.25H.
- BSS18LID23 - Lid for True18 curbside recycling container.
- BSSBC210023 - Lid for SIR21 and SIR24 curbside recycling containers.



TRUE18

### Durable Industrial Carts

Durable Industrial Carts are designed to secure small to large volume capacities. These strong and durable carts offer up to 350 lbs. of paper holding capacity. You can't find these in your local hardware store.

#### Features

- Made from minimum 35% recycled plastic.
- Durable hinged lid keeps recyclables in and pests and rain out.
- Equipped with heavy-duty roll-out wheels and an easy-grip handle.

#### Models

- BSS35GCRT05 - 35 gallon roll out cart, blue. Dimensions: 22.3"L x 22.8"W x 38.2"H.
- BSS65GCRT05 - 65 gallon roll out cart, blue. Dimensions: 26.5"L x 25.9"W x 42.2"H.
- BSS95GCRT05 - 95 gallon roll out cart, blue. Dimensions: 31.6"L x 27.7"W x 46.1"H.



## RECYCLING & ENVIRONMENTAL RECEPTACLES

SUPPLIED BY: BUSCH SYSTEMS INTERNATIONAL INC.

### Multi-Purpose Carts

The Multi-Purpose Mini Cart is ideal for a variety of collection, transportation and storage applications. The 3" all swivel Threadguard casters makes these mini carts durable and functional.

#### Features

- Minimum 25-55% recycled content.
- 3" threadguard casters.
- Casters in diamond pattern for quick and easy maneuverability.

#### Models

- BSSMPC125A - 12 cu. ft. multi-purpose cart. Inside dimensions: 35"L x 23"W x 25"H, Outside dimensions: 39"L x 27"W x 29"H, Weight: 40 lbs.
- BSSMPC135A - 15 cu. ft. multi-purpose cart. Inside dimensions: 37"L x 25"W x 26"H, Outside dimensions: 41"L x 29"W x 31"H, Weight: 45 lbs.
- BSSMPC145A - 16 cu. ft. multi-purpose cart. Inside dimensions: 38"L x 26"W x 28"H, Outside dimensions: 43"L x 31"W x 33"H, Weight: 50 lbs.



### Next Generation Carts

The Next Generation Carts combine a single wall body with double wall box-style lip for greater durability and maximum impact resistance. The combination of poly core wheels and heavy-duty casters ensure maximum maneuverability.

#### Features

- Minimum 25-55% recycled content.
- Single wall body.
- Designed for maximum impact resistance.
- Heavy-duty casters.

#### Models

- BSSNGC730B - 14 bushel cart, blue. Dimensions: 48"L x 31"W x 34.5"H. Capacity: 1000 lbs.
- BSSNGC750B - 19 bushel cart, blue. Dimensions: 60"L x 31.5"W x 35.5"H. Capacity: 1000 lbs.
- BSSNGC770B - 32 bushel cart, blue. Dimensions: 72"L x 35.5"W x 40"H. Capacity: 1500 lbs.



### BSSTT420C - Tilt Truck

Ideal for a variety of collection, transportation and storage applications. Minimum 25-55% recycled content.



### BSS55GROU01 - 55 Gallon Round Recycling & Waste Container

Popular for collecting various materials at different quantity levels. Minimum 25-55% recycled content. This attractive recycling bin has a lid available.

#### GSS55GALL01 - Lid for 55 Gallon Round Container



### BSSBATTERY24 - Battery Recycling Bin

The Battery Recycler is a unique and innovative response to the environmental issue of battery disposal. The Battery Recycler allows business users to collect their batteries and then dispose of them properly. This battery recycling bin comes with a lid with a battery hole opening that is easy to open and close. In addition, the container is the perfect size to hold an adequate number of batteries, yet will not become too heavy to move. Dimensions: 8.5"L x 9"W x 11"H. 9 qt. Brown. Minimum 25-55% recycled content.



## RECYCLING & ENVIRONMENTAL RECEPTACLES

SUPPLIED BY: BUSCH SYSTEMS INTERNATIONAL INC.

### Document Destruction Containers

Keep your documents confidential while maintaining security with document shredding bins, consoles and carts from Busch Systems. These document destruction containers are ideal for commercial offices and use innovative locking systems to allow for easy shredding service collection.

#### Features

- Sturdy lid makes tampering nearly impossible, yet it is easy to unlock and empty when full.
- Made from minimum 35% recycled plastic.
- Great for offices, deskside or centralized applications.

#### Models

- BSSPDC44 - 9 gallon personal document destruction container, grey. Dimensions: 16.75" L x 12" W x 13.25" H.
- BSSSDCART3520 - 35 gallon document destruction roll-out container, blue. Dimensions: 22.3"L x 22.8"W x 38.2"H.
- BSSSDCART6520 - 65 gallon document destruction roll-out container, blue. Dimensions: 26.5"L x 25.9"W x 42.2"H.
- BSSSDCART9520 - 95 gallon document destruction roll-out container, blue. Dimensions: 31.6"L x 27.7"W x 46.1"H.



### Heavy-Duty Salt or Sand Utility Bins

The Utility Bins and Sand & Salt Bins are multi-application containers ideal for storage. The double wall lid and molded-in hasp will keep contents dry and protected while remaining easily accessible.

#### Features

- Minimum 25-55% recycled content.
- Four capacities available.
- Lockable heavy-duty hasp.
- Thick, durable plastic.
- Impact and water resistant.

#### Models

- BSSSOS5529 - 5.5 cubic foot heavy-duty salt or sand bin, yellow.
- BSSSOS1129 - 11 cubic foot heavy-duty salt or sand bin, yellow.
- BSSSOS1829 - 18 cubic foot heavy-duty salt or sand bin, yellow.
- BSSSOS3629 - 36 cubic foot heavy-duty salt or sand bin, yellow.



### BSSKC200013 - Kitchen Compost Carrier

Portable and perfect for short term storage of kitchen compost. With its wide opening it is easy to clean off dishes directly into the container, and the lid design only requires one hand to open. All of the corners and edges are rounded so that it is simple to clean and empty, in addition to being dishwasher safe. The Kitchen Compost Carrier can also hang on a wall or cupboard door by way of two screw holes in the back. The KC-2000 is simply the best kitchen composter on the market. Available only in green. Dimensions: 8.5"L x 9"W x 11"H. 9 qt. Minimum 25-55% recycled content.



### Smoking Stations

Smoking stations keep your smoking areas clean while maintaining a professional appearance. These cigarette deposit systems look good, are effective, safe and are ideal for indoor and outdoor applications.

#### Features

- Disposal holes are designed to accept cigarette/cigar butts but not trash.
- Keeps weather out.
- Fire proof holding compartment.
- Lockable.
- Self extinguishes within minutes.
- 20 gauge stainless steel.

#### Models

- BSSEXECSTAT - Executive Smokers Station. Exterior wall-mounted. Dimensions: 7"L x 3"W x 9"H. Holds 200-500 cigarette butts.
- BSSWALLMOUNT - Exterior wall-mounted ashtray. Dimensions: 7"L x 5"W x 18"H. Holds 1000+ cigarette butts.



BSSEXECSTAT

## RECYCLING & ENVIRONMENTAL RECEPTACLES

SUPPLIED BY: BUSCH SYSTEMS INTERNATIONAL INC.

### Deskslider Recycling Container

The deskslider has been a very popular container in offices everywhere. With its convenient ability to fit underneath the drawer of standard desks, this deskside bin reduces "lazy tosses", ensuring recyclables are where they should be. Dimensions: 14.5"L x 11"W x 7"H. 3.5 gallons.

#### Features

- Minimum 25-55% recycled content.

#### Models

- BSSBC100101 - Deskslider, blue.
- BSSBC100112 - Deskslider, green.



### Hanging Waste Baskets

A great tool for dramatically increasing participation rates while ensuring clean sorts in your deskside recycling programs.

#### Features

- Minimum 25-55% recycled content.
- Hanging bracket has two screw slots to allow it to hang from desk or wall.
- Has rounded corners and edges allowing it to be easily cleaned.
- Optional lid available.

#### Models

- BSSBC150023 - Hanging waste basket, black. Dimensions: 7.5"L x 5"W x 6.5"H. 1.5 gallons.
- BSSBC1500L23 - Hanging waste basket lid.
- BSSPB12X16 - Hanging waste basket liners.



### Recycling Waste Baskets

Available in 2 sizes, the Recycling Waste Baskets are ideal for centralized recycling. They fit perfectly against a desk or wall and can be used for collecting waste or recycling.

#### Features

- Minimum 25-55% recycled content.
- Each container is a one injection molded seamless piece.
- Use in conjunction with the Hanging Wastebasket.

#### Models

- BSS14QT02 - 14 quart recycle basket, blue. Dimensions: 11.24"L x 8.25"W x 12.24"H.
- BSS14QT12 - 14 quart recycle basket, green. Dimensions: 11.24"L x 8.25"W x 12.24"H.
- BSS28QT02 - 28 quart recycle basket, blue. Dimensions: 14.25"L x 10.5"W x 15"H.
- BSS28QT12 - 28 quart recycle basket, green. Dimensions: 14.25"L x 10.5"W x 15"H.

