



Buell
AMERICAN MOTORCYCLES

TO ORDER FAX: 1-800-892-9651

Lifts



AKS250CS02

TechLift — Ultra Pro Split Lift

This scissors-type lift has been designed with safety in mind to handle the V-Rod and large motorcycles. It gives the same smooth and safe rise up as do all of the Bike-Lifts to the maximum of 48" high and has (10) safety stops to work from. This heavy-duty equipment surpasses all others of its type and promises to be in service at your dealership for many years to come.

Features:

- Tray slides forward to permit easy access and removal of the motorcycle's rear wheel.
- Front tray drops to permit easy removal of the front wheel or suspension.

Specifications:

- Dimensions: 87" l x 29" w
- Lift height range: 6 – 48"
- Capacity: 1,500 lbs.
- Weight: 475 lbs.

Models:

AKS250CS02 Air/hydraulic powered
AKS250CS03 Electric-powered

Includes:

- Heavy-duty wheel vise.
- Access ramp — extra long for low motorcycles.
- Side tool gutters.
- Front wheel bar stoppers.
- Metal and rubber tabletop work mats.
- Heavy-duty tie-down nylon straps.
- Handheld air/hydraulic controls with 10' of control line.



AKS250M002

AKS250MG02
*includes newly engineered wheel vise (not shown)

TechLift — Pro Comp Split Lift

The TechLift Pro Comp scissors-type lift is designed for working on over 95% of the Harley-Davidson and Buell motorcycles. It comes equipped with the same safety features as its big brother, with a slightly smaller tabletop that goes from 6 – 39" high and has (6) safety stops to work from. It comes complete with both a rear slide gate and a drop table front.

Features:

- Rear tray slides forward to permit easy access and removal of the motorcycle's rear wheel.
- The front tray drops permitting easy removal of the front wheel or suspension.

Specifications:

- Tabletop dimensions: 82" l x 23" w
- Lifting height range: 6 – 39"
- Capacity: 1,100 lbs.
- Weight: 380 lbs.

Models:

AKS250SS02 Air-powered
AKS250SS03 Electric-powered

Includes:

- Heavy-duty wheel vise.
- Access ramp — extra long for low motorcycles.
- Side tool gutters.
- Front wheel bar stoppers.
- Metal and rubber tabletop work mats.
- Heavy-duty tie-down nylon straps.
- Air/hydraulic pump with connecting hose.

TechLift — Air-Powered Super Sport Lifts

Both TechLift Super Sport lifts are hydraulic/air-powered scissors-type lifts and are designed for working on over 95% of the Harley-Davidson and Buell motorcycles. These lifts come equipped with the same safety features as the Pro Comp Split, with the tabletop that goes from 6 – 39" high and has (6) safety stops to work from. The first model has the built-in rear-sliding tray, while the second model is a standard flat table. Both of these lifts can accommodate a 16" front extension (special order) and/or 11" side extensions (AKS250SW50) in order to work with trikes or sidecars.

Specifications:

- Tabletop dimensions: 82" l x 29-1/2" w
- Lifting height range: 6 – 39"
- Capacity: 1,100 lbs.
- Weight: 380 lbs.

Models:

AKS250MG02 Equipped with a sliding rear tray and no drop front. Includes wheel vise. Air/hydraulic powered
AKS250M002 Flat-top lift with no rear tray or drop front. Air/hydraulic powered

Includes:

- Access ramp — extra long for low motorcycles.
- Side tool gutters.
- Front wheel bar stoppers.
- Metal and rubber tabletop work mats.
- Heavy-duty tie-down nylon straps.
- Handheld air/hydraulic controls with 10' of control line.



TO ORDER CALL: 1-877-HDEQUIP (433-7847)

Lifts/Motorcycle Stand

TechLift Lift Side Extensions

Model No. AKS250SW50

(1) pair 11" w x 91" l each, weight: 50 lbs. each. Heavy-duty all steel side extensions come equipped with extra long bolts to attach securely to the side of either Super Sport lifts, rear access ramps and front stop plates. The side extensions are designed to allow the TechLifts to safely accommodate motorcycles with sidecars, trikes, ATVs, etc.

Dolly Lift Wheel-About System

Model No. AKS250DOLY

Make your lift portable with the new retrofit dolly wheel system. This includes (2) adjustable wheels to be mounted to the rear sides of the Bike-Lift® lifts and a front handle/double wheel setup that will allow you to raise and move your lift on a smooth surface with little effort.

TechLift — Cruiser Custom Floor Lift

Model No. AKS250CFL5

A portable, compact floor lift designed specifically for motorcycles not equipped with center service stands. An excellent choice for the owners of the shop that needs to frequently service custom cruiser motorcycles. Wear-resistant metal casters allow you to slide the lift under benches for storage and will permit you to move a motorcycle around the shop once it's secured to the lift.

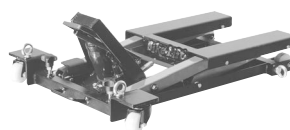
Specifications:

- Dimensions: 34" l x 26" w
- Lift height range: 5 – 17"
- Capacity: 1,100 lbs.
- Weight: 81 lbs.

Includes:

- Nylon tie-down straps.

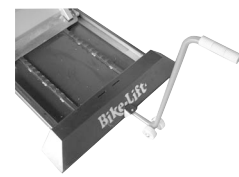
AKS250SW50



AKS250CFL5



AKS250MCL2



AKS250DOLY

Motorcycle Stand

A freestanding, portable stand designed to hold a motorcycle in an upright position. The stand will secure the motorcycle "straight up" and will hold the bike and a rider or two without having to balance the bike. Quick setup also makes suspension adjustments, maintenance and cleaning safe and easy. A choice of show chrome or tough powder-coat finishes puts this stand at home in any environment.



SUD101HAB



SUD101HABF



SUD101HAC



Features:

- Secures the motorcycle — motorcycles won't tip over.
- Freestanding unit — no side stand needed.
- Adjustable to fit tires from 3 – 10" wide.
- Fits front or rear tires.
- Quick and easy setup.
- Lightweight/portable.
- Easily mounts to trailers for transporting.
- Show chrome finish or black powder-coat.

Specifications:

- All 1/4" steel construction
- Stand weight: 45 lbs.
- Dimensions: Sides 22" w x 19" h, base 14" w x 30" l

Models:

- SUD101HAC Standard (3) hole chrome plated
- SUD101HAB Standard (3) hole black powder-coat
- SUD101HACF Chrome plated with flame
- SUD101HABF Black powder-coat with flame



TO ORDER FAX: 1-800-892-9651

Lifts

Handy Standard Air Lift 1000

Model No. HYI10740

The HYI10740 Handy Air Lift is used in shops around the world. It has a lifting capacity of 1000 lbs. and an 80" x 24" deck, making it ideal for working on motorcycles. It rises to a working height of 30" and when lowered, it is only 7" high, allowing for easy on-off loading. The lift is a solid steel fabrication and is powered by a pneumatic cylinder from your air source (90 – 100 p.s.i.). The convenient foot valve allows easy up/down with intermediate stops. Pick from the lift accessory attachments to customize your lift.

Specifications:

- Capacity: 1,000 lbs.
- Air requirement: 90 – 100 p.s.i.
- Table top dimension: 24" w x 80" l
- Maximum height: 30"
- Minimum height: 7"
- Weight: 304 lbs.

Accessories:

- HYI14476 CV-17 Cycle Vise — the essential lift accessory. Position your cycle upright. Vise opening: 7-1/2". Dimensions: 21" w x 15" h. Weight: 37 lbs.
- HYI10730 8" Side Extensions — ideal for larger bikes, ATVs and extra work space. Expands width of lift from 24" to 40". (2) ea. Ramp extensions included. Dimensions: 8" w x 80" l. Weight: 80 lbs.
- HYI10728 12" Side Extensions — the perfect add-on for big cruisers, ATVs and more work space. Expands width of lift from 24" to 48". (2) ea. Includes stabilizer and ramp extensions. Weight: 115 lbs.
- HYI10736 13" Front Extension — ideal for extra length when working on long bikes. Extends lift top to 93". Dimensions: 3-3/4" h x 24-1/2" w x 24" l. Weight: 29 lbs.

HYI10732 Lift Dolly — our lift is heavy, so glide it around your shop easily. Weight: 15 lbs.

S.A.M. 1000 Air Lift

Model No. HYI16000

Same great lift as our standard Air Lift with additional features of a drop-out panel and 84" length for working on longer motorcycles.

Specifications:

- Capacity: 1,000 lbs.
- Air requirement: 90 – 100 p.s.i.
- Table top dimensions: 24" w x 84" l
- Maximum height: 30"
- Minimum height: 7"
- Weight: 330 lbs.

Accessories:

- HYI14476 CV-17 Cycle Vise — the essential lift accessory. Position your cycle upright. Vise opening: 7-1/2". Dimensions: 21" w x 15" h. Weight: 37 lbs.
- HYI16003 8" Side Extensions — ideal for larger bikes, ATVs and extra work space. Expands width of lift from 24" to 40". (2) ea. Ramp extensions included. Dimensions: 8" w x 82" l. Weight: 85 lbs.
- HYI16002 12" Side Extensions — the perfect add-on for big cruisers, ATVs and more work space. Expands width of lift from 24" to 48". (2) ea. Includes stabilizer and ramp extensions. Weight: 125 lbs.
- HYI16011 13" Front Extension — ideal for extra length when working on long bikes. Weight: 29 lbs.
- HYI10732 Lift Dolly — our lift is heavy, so glide it around your shop easily. Weight: 15 lbs.



HYI10740



HYI10730



HYI10728



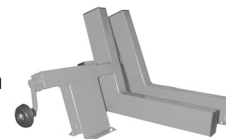
HYI16000



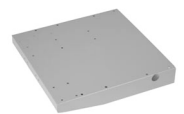
HYI16003



HYI16002



HYI14476



HYI16011



HYI10732



TO ORDER CALL: 1-877-HDEQUIP (433-7847)

Lifts/Dolly



KLS359318

Bestway In-Ground Hydraulic Lifts

These heavy-duty, air/hydraulic motorcycle lifts are easily installed and require a 4-1/2' deep hole. Minimum height is 3", maximum rise above floor is 36". All units come complete with a three-way valve for attaching air line to operate. Motorcycle lifts can be turned 360°. Lifting capacity is 1,200 lbs. for units with 5" pistons and 1,800 lbs. for units with 6" piston.

Models:

KLS359316 Standard lift for Harley-Davidson service, 5" piston, 18" x 18" top plate dimension, comes with predrilled top designed for securing motorcycle frame to top of lift

KLS359318 Standard lift for Harley-Davidson service, 6-1/2" piston, 18" x 18" top plate dimension, comes with predrilled top, designed for securing motorcycle frame to top of lift

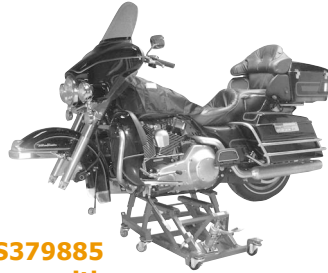
Options:

KLS359319 Harley-Davidson platform — 18" w x 18" l.

KLS359321 Standard casing, 5" PVC for ground moisture protection — use for KLS35-9316.

KLS359322 Standard casing, 6-1/2" PVC for ground moisture protection — use for KLS35-9318.

WARRANTY: One year on workmanship



KLS379885
shown with
KLS359872

MC550 Multi-Lift

Multi-lift jack can be adapted to work with most motorcycles. Minimum height: 4-1/2", maximum height: 17". Available in powder coated blue or red.

Features:

- 1-1/2" square tubing.
- Locking caster wheels.
- 16" padded contact area.
- Foot-operated locks.
- Tie-down points provided.
- 4-ton, foot operated bottle jack.

Models:

KLS379885 Multi-lift (blue)

KLS379906 Multi-lift (red)



KLS379906



KLS359872

MC460 Shop Dolly

This dolly allows bikes to be easily moved around the shop. Works with custom lift-type jacks and MC450 center stand.

Features:

- Adjustable width from 13 – 20" at base
- 12 – 15" adjustable height.
- (4) tie-down attachment points and rubber pads at frame contact points.
- Swivel neoprene wheels.

Models:

KLS359872 Shop dolly (blue)

KLS359996 Shop dolly (red)

Program Benefits!

- One-stop shopping.
- Products from the best sources in the service equipment industry.
- Competitive lease rates.
- Knowledgeable customer service representatives.
- Special purchase opportunities throughout the year.
- Price matching.
- And much more ...



Buell
AMERICAN MOTORCYCLES

TO ORDER FAX: 1-800-892-9651

Wheel Maintenance Stands/Wheel Vise/Ramp/Truing Stand

MC455 Fat Jack

Everything you like about the MC450 and more. Fat Jack's wider deck with rubber non-skid pad increases your lifting area for increased stability with the reliability of K&L engineering.

MC450 Center Jack

This easy-to-use scissor jack is the answer for raising bikes and ATVs. Lift front or rear of bikes that are on lifts. Add the adaptor kits for more flexibility.

Specifications:

- Minimum height: 3-1/2"
- Maximum height: 13"
- Dimensions:

KLS378660	405 mm (16") l x
	255 mm (10") w
KLS379841	405 mm (16") l x
	135 mm (5-1/2") w
- Maximum height: 330 mm (13")
- Base width: 355 mm (14")
- UPS shippable



KLS378660

KLS379841



KLS358621

MC305 Wheel Truing and Balance Stand

Model No. KLS358621

This portable wheel truing stand works on all motorcycle wheel sizes from 14 – 21" wheels. Wheel can be mounted on adjustable centering cones or ball bearings (using axle) for truing and static balancing of wheels. Frame rails can be adjusted for wide rims/wheels. Lightweight, zinc plated press steel frame.

Accessory:

- KLS350900 6 into 1 spoke wrench.
 Sizes:
 6.46 mm (.254"),
 6.09 mm (.240"),
 5.7 mm (.224"),
 5.45 mm (.215"),
 4.97 mm (.190"),
 4.35 mm (.172")

WARRANTY: One year against material defects and workmanship.

Models:

- KLS378660 MC455 Fat Jack with pad
 KLS379841 MC450 Center Jack

Options:

- KLS369830 MC450 Rubber Non-Skid Pad mounts to top surface of the center jack. Has self-adhesive backing.
- KLS379896 Adaptor plate — mounts onto the MC450 and features (4) adjustable frame contact points. Fits MC450s manufactured 1999 on.
- KLS379134 MC450 repair kit — fits MC450s manufactured 1999 on.

MC650/MC600 Wheel Vise

Model No. KLS359926

New heavy-duty design features a redesigned shape, zinc plated steel wheel clamps with rubber inserts to protect rims and brass bushings for durability. Mounting rails allow quick and easy removal and fore/aft adjustments.



KLS359926



KLS350808

Low Riding Ramp

Model No. KLS350808

Constructed from .125" thick diamond plate metal, this ramp will raise the front or rear wheel 4-1/2". The bottom features rubber footing to ensure a positive grip. This ramp is essential when lifting a lowered motorcycle with the MC550 Multi-Lift. Features a built-in handle.

WARRANTY: One year against material defects and workmanship.



KLS379896



TO ORDER CALL: 1-877-HDEQUIP (433-7847)

Floor Service Jacks/Jack Stands/Hand Trucks

2-1/4 Ton Capacity Low Profile Floor Service Jack

Model No. NRI71240

Features:

- 4-3/4" square polyurethane covered saddle for better grip.
- Additional foot pedal pumping feature provides fast saddle raising to the load.
- Controlled load lowering by pulling "T" handle and rotating clockwise 1/4 turn.
- Long, removable "T" handle with rubber hand grips provides ease of pumping, longer reach for positioning under overhang and ease for transportation and storage.
- Safety bypass system protects pressure cylinder.
- Non-marring front wheels and rear caster wheels protect dealer showroom floors.

Specifications:

- Overall length: 58"
- Overall width: 17-1/2"
- Lift height (low): 4"
- Lift height (high): 20"
- Shipping weight: 135 lbs.


NRI71240

3-Ton Jack Stands (sold in pairs)

Model No. NRI81004C

Specifications:

- Low height: 12"
- High height: 17-1/2"
- Height interval: 9/16"
- Base: 7-1/2" x 7-7/8"
- Shipping weight: 19 lbs. per pair


NRI81004C

2-1/4 Ton Capacity Floor Service Jack

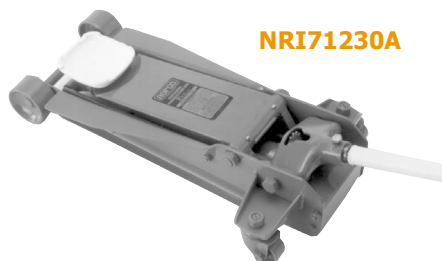
Model No. NRI71230A

Features:

- Long, removable two-piece handle with rubber hand grip.
- Safety overload system prevents jack from being used beyond its rated capacity.
- Heavy-duty constructed chassis for added strength and dependability.

Specifications:

- Overall length: 28-1/2"
- Rear maximum width: 15"
- Front maximum width: 11-1/2"
- Extended height: 20"
- Low height: 3-3/4"
- Shipping weight: 97 lbs.


NRI71230A

HMHR3010FP

Medium-Duty Hand Trucks

Features:

- Medium-duty hand trucks for day-to-day work.
- Welded steel construction supports up to 300 lbs.
- 13-gauge, 7/8" o.d. welded pipe frame, 1/8" wall.
- Standard 6" x 14" heavy gauge steel nose plate.
- Ships completely assembled and ready to use.
- Optional 10" x 14" or 14" x 14" nose plate available.
- Concave cross straps and straight vertical strap strengthen frame.
- Heavy flat bar and tube for climbing stairs.
- 5/8" diameter axle.
- 45" h x 22" w.
- Choice of 10" diameter air-filled full pneumatic tires or semi-pneumatic.
- Color: Gray.

Models:

 HMHR3010FP
 HMHR3010SP

 Full pneumatic tires
 Semi-pneumatic tires